

Go to www.vtechphones.com (US) to register your product for extended warranty support and latest VTech product news.

Go to phones.vtechcanada.com (CA) for latest VTech product news.

IS8128-/IS8128-2/IS8128-3/IS8128-4/IS8128-5

IMPORTANT SAFETY INSTRUCTIONS

- When using your telephone equipment, basic safety precautions should always be followed to reduce the risk of fire, electric shock and injury, including the following:
- Read and understand all instructions.
 - Follow all warnings and instructions marked on the product.
 - Unplug this product from the wall outlet before cleaning. Do not use liquid or aerosol cleaners. Use a damp cloth for cleaning.
 - Do not install the telephone base at a height above 2 meters.
 - Do not use this product near water such as near a bath tub, wash bowl, kitchen sink, laundry tub or a swimming pool, or in a wet basement or shower.
 - Do not place this product on an unstable table, shelf, stand or other unstable surfaces.
 - Avoid placing the telephone system in places with extreme temperature, direct sunlight, or other electrical devices. Protect your phone from moisture, dust, corrosive liquids and fumes.
 - Avoid placing the telephone system in slots and openings in the back or bottom of the telephone base and handset are provided for ventilation. To protect them from overheating, these openings must not be blocked by placing the product on a soft surface such as a bed, sofa or rug. This product should never be placed near or over a radiator or heat register. This product should not be placed in any area where proper ventilation is not provided.
 - This product should be operated only from the type of power source indicated on the marking label. If you are not sure of the type of power supply in your home or office, consult your dealer or local power company.
 - Do not allow anything to rest on the power cord. Do not install this product where the cord may be walked on.
 - Never push objects of any kind into this product through the slots in the telephone base or handset because they may touch dangerous voltage points or create a short circuit. Never spill liquid of any kind on the product.
 - To reduce the risk of electric shock, do not disassemble this product, but take it to an authorized service facility. Opening or removing parts of the telephone base or handset other than specified access doors may expose you to dangerous voltages or other risks. Incorrect reassembly can cause electric shock when the product is subsequently used.
 - Do not overload wall outlets and extension

- Unplug this product from the wall outlet and refer servicing to an authorized service facility under the following conditions:
 - When the power supply cord or plug is damaged or frayed.
 - If liquid has been spilled on the product.
 - If the product has been exposed to rain or water.
 - If the product does not operate normally by following the operating instructions. Adjust only those controls that are covered by the operation instructions. Improper adjustment of other controls may result in damage and often requires extensive work by an authorized technician to restore the product to normal operation.
 - If the product has been dropped and the telephone base and/or handset has been damaged.
 - If the product exhibits a distinct change in performance.
- Avoid using a telephone (other than cordless) during an electrical storm. There is a remote risk of electric shock from lightning.
- Do not use the telephone to report a gas leak in the vicinity of the leak. Under certain circumstances, a spark may be created when the adapter is plugged into the power outlet, or when the handset is replaced in its cradle. This is a common event associated with the closing of any electrical circuit. The user should not plug the phone into a power outlet, and should not put a charged handset into the cradle, if the phone is located in an environment containing concentrations of flammable or flame-supporting gases, unless there is adequate ventilation. A spark in such an environment could create a fire or explosion. Such environments might include: medical use of oxygen without adequate ventilation; industrial gases (cleaning solvents; gasoline vapors; etc.); a leak of natural gas; etc.
- Only put the handset of your telephone near to your ear when it is in normal talk mode.
- The power adapter is intended to be correctly oriented in a vertical or floor mount position. The prongs are not designed to hold the plug in place if it is plugged into a ceiling, under-the-table or cabinet outlet.
- For pluggable equipment, the socket-outlet shall be installed near the equipment and shall be easily accessible.

CAUTION: Use only the batteries indicated in this manual. There may be a risk of explosion if a wrong type of battery is used for the handset. Use only the supplied rechargeable batteries or replacement batteries BT162342, BT162343 for the handset. Do not dispose of batteries in a fire. They may explode. Do not use the battery in following conditions:

- High or low extreme temperature during use, storage or transportation.
- Replacement of a battery with an incorrect type that can defeat a safeguard.
- Disposal of a battery into fire or a hot oven, or mechanically crushing or cutting of a battery, that can result in an explosion.
- Leaving a battery in an extremely high temperature surrounding environment that can result in an explosion or the leakage of flammable liquid or gas.
- A battery subjected to extremely low air pressure that can result in an explosion or the leakage of flammable liquid or gas.

SAVE THESE INSTRUCTIONS

- Use only the batteries provided or equivalent. To order a replacement, visit our website at www.vtechphones.com or call 1 (800) 595-9511. In Canada, go to phones.vtechcanada.com or call 1 (800) 267-7377.
- Do not dispose of the battery in a fire. Check with local waste management codes for special disposal instructions. Do not open or mutilate the battery. Released electrolyte is corrosive and may cause burns or injury to the eyes or skin. The electrolyte may be toxic if swallowed.
- Exercise care in handling batteries in order not to create a short circuit with conductive materials.
- Charge the battery provided with this product only in accordance with the instructions and limitations specified in this manual.

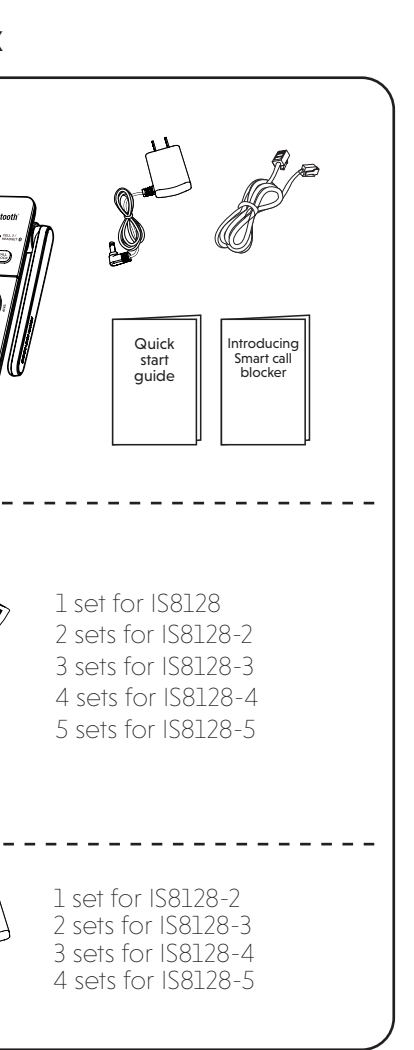
Precautions for users of implanted cardiac pacemakers

Cardiac pacemakers (applies only to digital cordless telephones): Wireless Technology Research, LLC (WTR), an independent research entity, led a

WHAT'S IN THE BOX

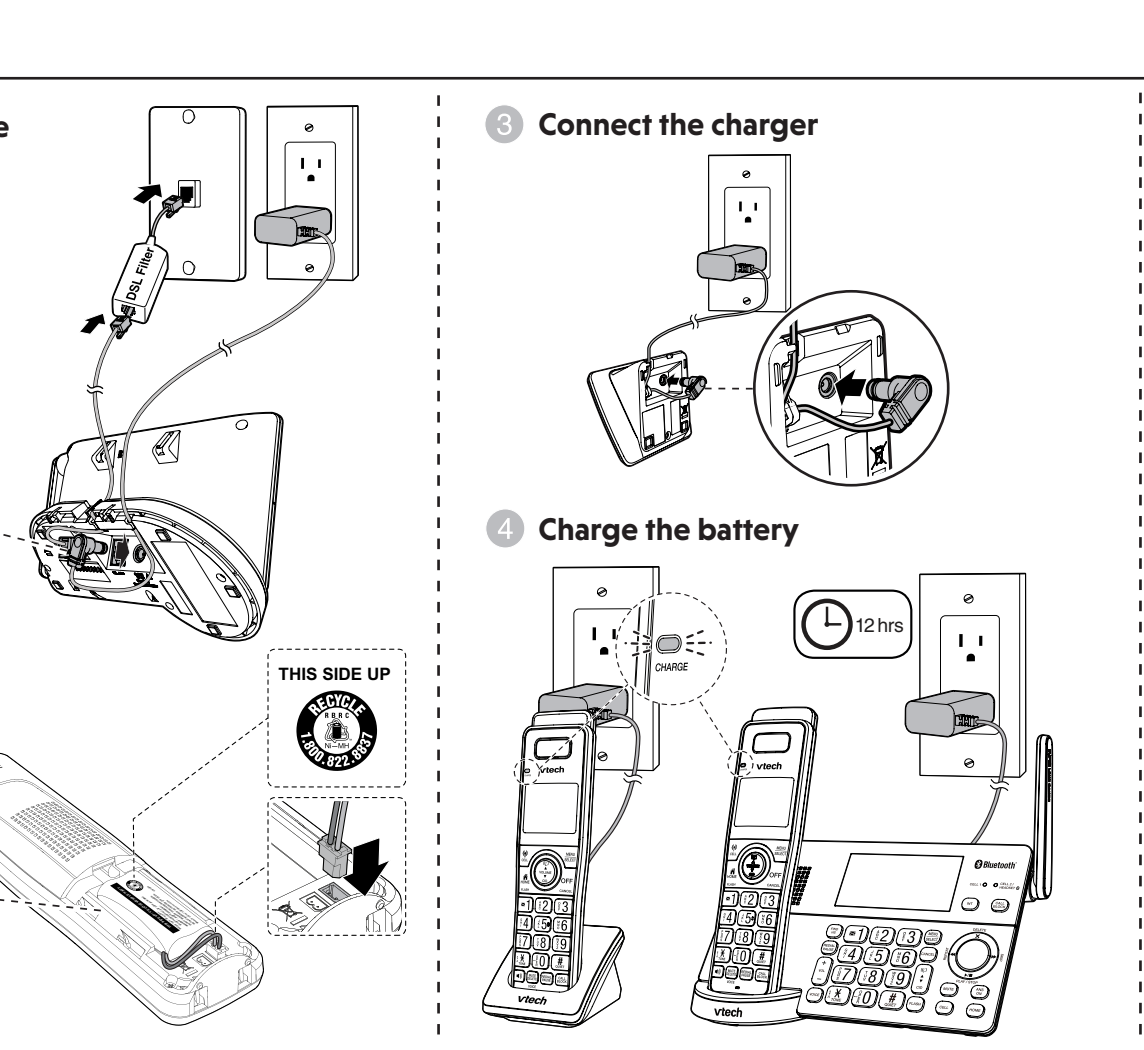
- 1 set for IS8128
- 2 sets for IS8128-2
- 3 sets for IS8128-3
- 4 sets for IS8128-4
- 5 sets for IS8128-5

- 1 set for IS8128-2
- 3 sets for IS8128-4
- 4 sets for IS8128-5



CONNECT AND INSTALL

- Connect the telephone base**
If you subscribe to digital subscriber line (DSL) high-speed Internet service through your telephone line, make sure you connect a DSL filter (not included) to the telephone wall jack.
- Install the battery**
- Connect the charger**
- Charge the battery**



Display	Handset:	Telephone base:
	HANDSET 1	BASE
	The handset battery is fully charged.	
	Handset or telephone base ringer is off.	
	New voicemail received from your telephone service provider.	
	New caller ID log entry.	
	Displays when Home line is in use.	
	Bluetooth device(s) is/are paired and active.	
	Bluetooth device / Cell line is in use.	
	Answering system is on.	
	Handset displays the current message number being played and the total number of new/old messages recorded.	
	Telephone base message counter displays the total number of messages.	
	The ECO mode activates automatically to reduce power consumption when the handset is within range of the telephone base.	

2 SETUP

After you install your telephone or power returns following a power outage and battery depletion, the handset and telephone base will prompt you to set the date and time, and to configure the Smart call blocker* and answering system through voice guide.

Date and time
Follow the steps below to set the date and time. For example, if the date is 25 July, 2023, and the time is 12:05 PM:

When the handset and telephone base prompt you to set the date and time:

- Enter the date.
- Press **SELECT**.
- Enter the time.
- Press **SELECT**.

Follow the following steps to set the date and time if you skipped the prompt.

- Press **MENU**.
- Press **▼/▲** to scroll to **Set date/time**, then press **SELECT**.

DECT 6.0 cordless telephone with BLUETOOTH® wireless technology

Quick start guide

Scan the QR code for support information

US CA

3 OPERATE

Make a home call

Handset: Press **HOME FLASH** - OR - **HOME**

Telephone base: Press **HOME**

Enter the phone number.

Make a cell call

Handset: Press **CELL** - OR - **CELL**

Telephone base: Press **CELL**

Enter the phone number, and then press **SELECT**.

NEED HELP?

For operations and guides to help you using your telephone system, and for latest information and supports, go and check the online help topics and online FAQs.

Use your smartphone or mobile device to access our online help.

- Go to <https://help.vtechphones.com/IS8128> or <https://phones.vtechcanada.com/en/support/technical-support/product/4625>; OR
- Scan the QR code on the right. Launch the camera app or QR code scanner app on your smartphone or tablet. Hold the device's camera up to the QR code and frame it. Tap the notification to trigger the redirection of the online help.

If the QR code is not clearly displayed, adjust your camera's focus by moving your device closer or further away until it is clear. You can also call our Customer Support at 1 (800) 595-9511 [in US] or 1 (800) 267-7377 [in Canada] for help.

US CA

Video tutorials

Answer a home call

Handset: Press **HOME FLASH** - OR - **HOME**

Telephone base: Press **HOME**

End a home call

Handset: Press **OFF** - OR - **CANCEL**

Telephone base: Press **HOME**

End a cell call

Handset: Press **OFF** - OR - **CANCEL**

Telephone base: Press **CELL**

Answer a cell call

Handset: Press **CELL** - OR - **CELL**

Telephone base: Press **CELL**

Volume

Handset: Press **VOLUME** - OR - **CID**

Telephone base: Press **+** - OR - **-**

BLUETOOTH

To use a Bluetooth enabled cellular phone or headset with your telephone, you must first pair and connect your Bluetooth cellular phone or headset with the telephone base. Before you begin, make sure that you have cellular coverage and your Bluetooth enabled cell phone or headset is not connected to any other Bluetooth device.

Add a Bluetooth cell phone

- Press **MENU** on the telephone base.
- Press **▼/▲** to scroll to **Bluetooth**, then press **SELECT**.
- Press **SELECT** to select **Add cellular**.
- Turn on the Bluetooth feature of your cell phone.
- Once your cell phone finds your telephone (VTECH DECT 6.0), press the appropriate key on your cell phone to continue the pairing process.

BLUETOOTH

Add a Bluetooth headset

- Press **MENU** on the telephone base.
- Press **▼/▲** to scroll to **Bluetooth**, then press **SELECT**.
- Press **▼/▲** to scroll to **Add headset**, then press **SELECT**.
- Set your headset to discoverable mode.
- Refer to the user's manual of your Bluetooth headset on how to pair it to your IS8129 telephone.

BLUETOOTH

Download a cell phone phonebook using the telephone base

Before downloading a phonebook, make sure the cell phone is paired, active, and connected to your IS8129.

- Press **MENU** on the telephone base.
- Press **▼/▲** to scroll to **Bluetooth**, then press **SELECT**.
- Press **▼/▲** to scroll to **Download PB**, then press **SELECT**.

BLUETOOTH

Activate remote voice control

Make sure your cell phone is paired and connected to your telephone system via Bluetooth.

Using the cordless handset:

- Press **VOICE** on the handset.

Using the telephone base:

- Press **VOICE** on the telephone base.

When the handset or telephone base plays the confirmation tone as forwarded by the cell phone's voice app, start speaking toward the handset or telephone base, and then wait for feedback. Make reply to the voice app's feedback, if necessary.

BLUETOOTH

Voice guide for Smart call blocker / Answering system

After setting the date and time, the telephone base will prompt if you want to set Smart call blocker, and the answering system. For more details, see **Use voice guide to set Smart call blocker** in the **Introducing Smart call blocker** leaflet and **Use voice guide to set Answering system** in the online help topics.

When the telephone base prompts you to set up the Smart call blocker via voice guide:

- Press **MENU** on the telephone base to start voice guide setup.

This feature assists you to do the basic setup of the answering system. You can follow the voice guide to record your own announcement, set the number of rings and the message alert tone.

When the telephone base prompts you to set up the answering system via voice guide:

- Press **MENU** on the telephone base to start voice guide setup.

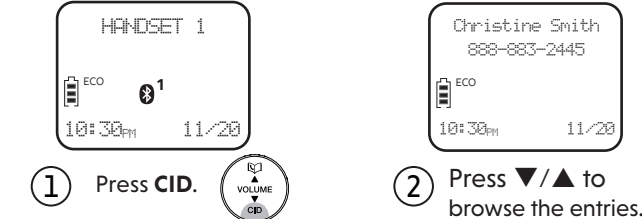
*Includes licenced Qaltel™ technology. Qaltel™ is a trademark of Truecall Group Limited.

CALLER ID

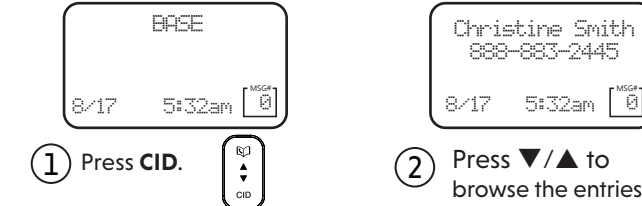
If you subscribe to caller ID service, information about each caller appears after the first or second ring. The caller ID log stores up to 50 entries. Each entry has up to 24 digits for the phone number and 15 characters for the name.

Review caller ID log entries

Handset:



Telephone base:



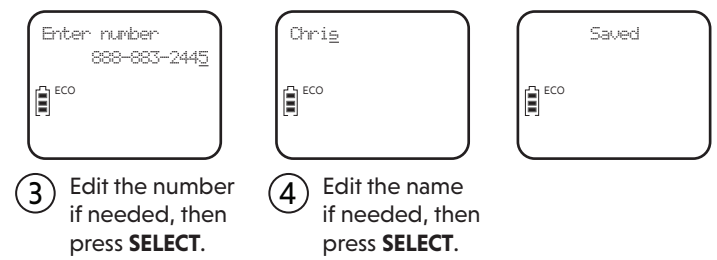
Dial a caller ID log entry

When your desired caller ID entry displays on the handset or telephone base screen:



Save a caller ID log entry to the phonebook

When your desired caller ID entry displays on the handset:



Delete a caller ID log entry

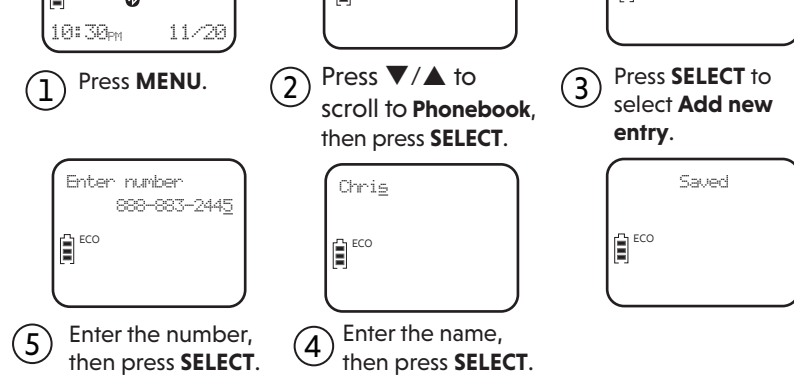
When your desired caller ID entry displays on the handset or telephone base screen:



PHONEBOOK

The phonebook can store up to 1,200 entries, which are shared by all handsets and the telephone base. Each entry may consist of a telephone number up to 30 digits, and a name up to 15 characters.

Add a phonebook entry

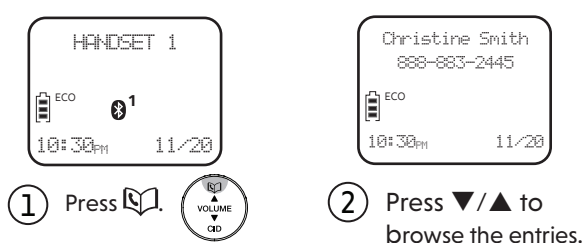


Delete a phonebook entry

When your desired phonebook entry displays:

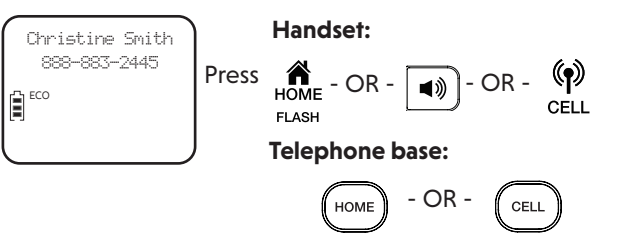


Review phonebook entries



Dial a phonebook entry

When your desired phonebook entry displays:



LCD language setting

If you accidentally set the LCD language to Spanish or French, you can change the LCD language back to English while the telephone is not in use:

- On the telephone base, press MENU and then enter **364#**.
- On the handset, press MENU and then enter **X364#**.

FOR C-UL COMPLIANCE ONLY

- ### Mesures de sécurité importantes
- Afin de réduire les risques d'incendie, de blessures corporelles ou d'électrocution, suivez toujours ces mesures préventives de base lorsque vous utilisez votre téléphone :
- Lisez et comprenez bien toutes les instructions.
 - Observez toutes les instructions et mises en garde inscrites sur l'appareil.
 - Débranchez le téléphone de la prise murale avant de le nettoyer. Utilisez pas de nettoyeurs liquides ni en aérosol. N'utilisez qu'un chiffon doux et légèrement humecté.
 - ATTENTION:** Ne pas installer le socle téléphonique à une hauteur supérieure à 2 mètres.
 - N'utilisez pas ce produit près de l'eau, tel que près d'un bain, d'un lavabo, d'un évier de cuisine ou d'un bac de lavage ou d'une piscine, ou dans un sous-sol humide ou sous la douche.
 - Ne déposez pas de téléphone sur un chariot, support ou table chancelants. L'appareil pourrait tomber et être sérieusement endommagé.
 - Évitez d'installer le système téléphonique dans les endroits soumis à une température extrême, à la lumière directe du soleil ou à proximité immédiate d'autres appareils électriques ou électroniques. Évitez tout chauffage près des sources d'humidité, la poussière, les vapeurs et les liquides corrosifs.
 - Le boîtier de l'appareil est doté de fentes et d'ouvertures d'aération situées à l'arrière ou en dessous. Afin d'empêcher la surchauffe, ces ouvertures ne doivent pas être obstruées en plaçant l'appareil sur un lit, divan, tapis ou autre surface similaire. Ne placez pas cet appareil à proximité d'un élément de chauffage ni d'une plume électrique. De plus, ne l'installez pas dans une unité murale ou un cabinet fermé qui ne possède pas de ventilation adéquate.
 - Ne faites pas fonctionner cet appareil qu'avec le type d'alimentation indiqué sur les étiquettes de l'appareil. Si vous ne connaissez pas le voltage de votre maison, consultez votre marchand ou votre fournisseur d'électricité.
 - Ne déposez rien sur le cordon d'alimentation. Installez cet appareil dans un endroit sécuritaire, là où personne ne pourra trébucher sur la ligne d'alimentation ni le cordon téléphonique modulaire.
 - N'insérez jamais d'objets à travers les fentes et ouvertures de cet appareil, car ils pourraient tonner à des points de contact dangereux ou court-circuiter les connexions, ce qui constituerait un risque d'incendie ou d'électrocution. N'échappez pas de liquides dans l'appareil.
 - Afin de réduire les risques d'électrocution, ne démontez pas l'appareil, mais apportez-le plutôt à un centre de service qualifié s'il doit être réparé. Enlevant le couvercle, vous vous exposez à des tensions dangereuses ou autres dangers similaires. Un remontage inadéquat peut être à l'origine d'une électrocution lors d'une utilisation ultérieure de l'appareil. Débranchez l'appareil avant de procéder au nettoyage. Utilisez un chiffon humide et doux.
 - Ne surchargez pas les prises de courant et les rallonges.
 - Débranchez cet appareil et communiquez avec le département de service à la clientèle de VTech dans les cas suivants :
 - Lorsque le cordon d'alimentation est endommagé ou écorché.
 - Si du liquide a été échappé dans l'appareil.
 - Si l'appareil a été exposé à une source d'humidité telle que la pluie ou l'eau.
 - Si le produit ne fonctionne pas normalement en respectant les instructions de fonctionnement. Réglez uniquement les commandes indiquées dans les instructions de fonctionnement.
- Instructions de fonctionnement. Les réglages incorrects des autres commandes pourraient provoquer un dommage qui pourrait exiger un travail exhaustif de la part d'un technicien autorisé afin de rétablir le fonctionnement normal de l'appareil.
- Ne jetez pas la pile au feu. Vérifiez les instructions spécifiques de mise au rebut.
 - N'ouvrez pas et ne mettez pas la pile. L'électrolyte qui s'en échapperait est corrosif et pourrait causer des brûlures ou des blessures aux yeux ou à la peau. L'électrolyte est toxique si avalé.
 - Soyez prudents lorsque vous manipulez les piles afin d'éviter les courts-circuits provoqués par des matériaux conducteurs.
 - Rechargez la pile incluse avec cet appareil, selon les instructions et limites spécifiées dans ce guide d'utilisation.
- ### Stimulateurs cardiaques implantés dans l'organisme
- Les stimulateurs cardiaques (s'applique uniquement aux téléphones numériques sans fil) :
- L'organisme Wireless Technology Research, LLC (WTR), une firme de recherche indépendante, a mené une évaluation pluridisciplinaire des interférences entre les téléphones sans fil portatifs et les stimulateurs cardiaques implantés dans l'organisme. Appuyée par l'Administration des aliments et drogues (FDA) des États-Unis, la firme WTR recommande aux médecins :
 - Avant de tenir le téléphone sans fil à une distance d'au moins six pouces du stimulateur cardiaque.
 - Les broches ne sont pas conçues pour maintenir l'adaptateur en place si celui-ci est barchné dans une prise au plafond ou sous une table/ armoire.
 - Pour le MATÉRIEL RACCORDE PAR PRISE DE COURANT, le socle de prise de courant doit être installé à proximité du matériel et/ou le assemblage de prise.
 - MISE EN GARDE:** Il peut y avoir un risque d'explosion si vous utilisez le mauvais type de piles pour le téléphone. N'utilisez que les piles rechargeables incluses ou les piles de rechange de type NiMH (BT162342/BT162342). N'incinerez pas les piles. Celles-ci risqueraient d'exploser.
 - Évitez d'utiliser la batterie dans les conditions suivantes :
 - des températures extrêmes faibles ou élevées auxquelles une batterie peut être soumise pendant l'utilisation, le stockage ou le transport;
 - Remplacement d'une batterie par un type incorrect pouvant supprimer une prise électrique fonctionnelle. La prise électrique ne doit pas être contrôlée par une prise au rebut d'une batterie dans un feu ou dans un four chaud, ou écrasement mécanique ou coupeure d'une batterie, susceptible de provoquer une explosion;
 - maintien d'une batterie dans un environnement à très haute température pouvant provoquer une explosion ou la fuite de liquide ou de gaz inflammables;
 - batterie soumise à une pression de l'air extrêmement faible pouvant provoquer une explosion ou la fuite de liquide ou de gaz inflammables.
 - N'utilisez que les adaptateurs inclus avec ce produit. L'utilisation d'un adaptateur dont la polarité ou la tension serait inadéquate risque d'endommager sérieusement le produit et mettre votre sécurité en péril.
 - La plaque signalétique appliquée est située au bas ou à proximité du produit.
- ### CONSERVEZ CES INSTRUCTIONS
- Pile**
- N'utilisez que la pile incluse ou l'équivalent. Pour commander une pile de recharge, visitez notre site Web au www.vtechphones.com ou composez le 800-595-9511. Au Canada, visitez le phones. phones.vtechcanada.com ou composez le 800-267-7377.

ANSWERING SYSTEM

About the built-in answering system and voicemail service

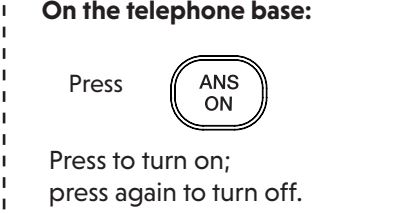
For message recording, your telephone has a built-in answering system, and it also supports voicemail service offered by your telephone service provider (subscription is required, and fee may apply).

Built-in answering system VS Voicemail service

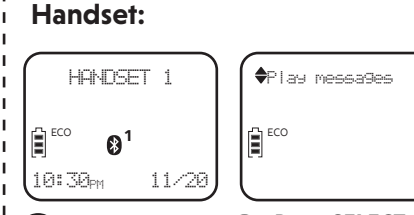


SUPPORTED BY	Telephone system	Telephone service provider
SUBSCRIPTION	No	Yes
FEES	No	May apply
ANSWER INCOMING CALLS	<ul style="list-style-type: none"> After 4 rings by default. It can be changed in the handset or the telephone base menu. 	<ul style="list-style-type: none"> Usually after 2 rings. It can be changed by contacting your telephone service provider.
STORAGE	Telephone base	Server or System
DISPLAY NEW MESSAGES	<ul style="list-style-type: none"> Handset - XX new messages Telephone base - XX New messages 	<ul style="list-style-type: none"> Handset - Telephone base -
RETRIEVE MESSAGES	<ul style="list-style-type: none"> Press OR Press MENU, and then select Play messages on the handset; OR Access remotely with an access code. 	<ul style="list-style-type: none"> Press and hold OR Press and hold OR Press and hold

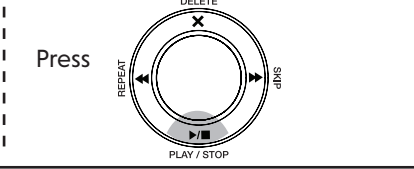
Turn the built-in answering system on or off



Message playback

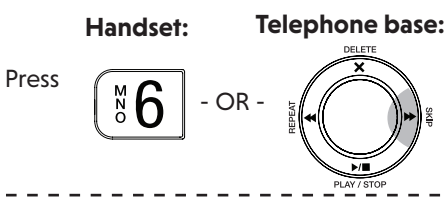


Telephone base:

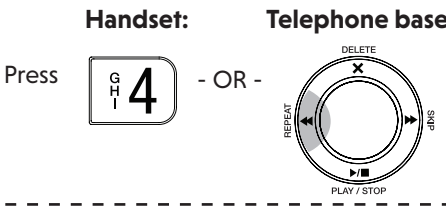


Options while message playback

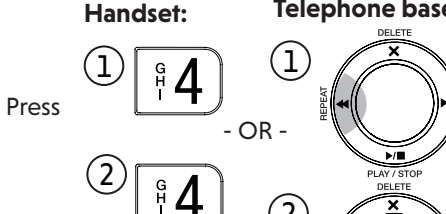
Skip a message



Repeat the playing message

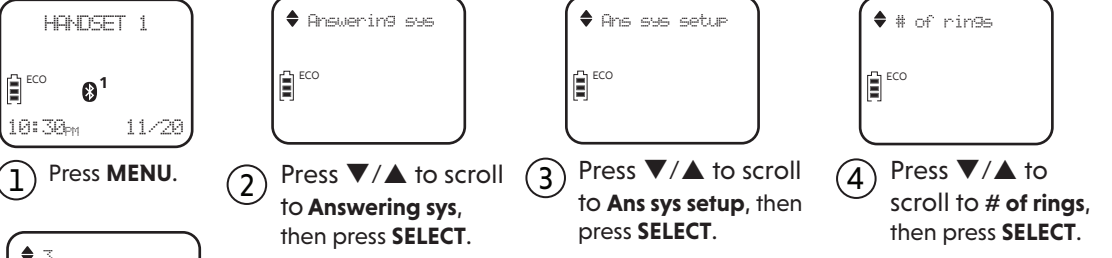


Play the previous message



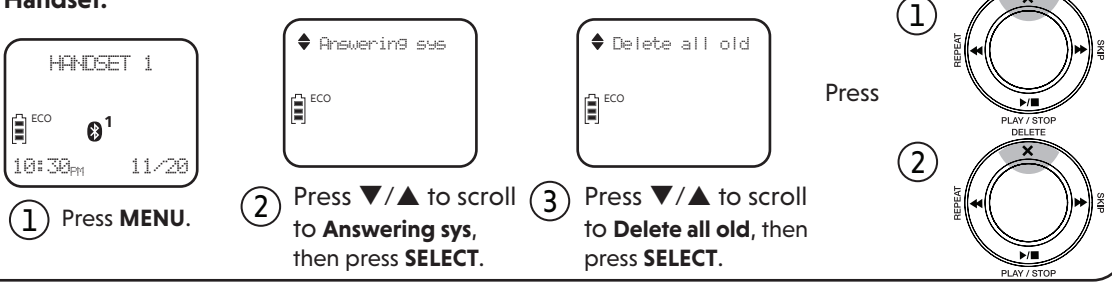
Set number of rings

You can set your answering system to answer calls at least two rings earlier than your voicemail service. For example, if your voicemail service answers after six rings, set your answering system to answer after four rings. Thus, if you are on a call, or if the answering system is busy recording a message and you receive another call, the second caller can leave a voicemail message.



You can set the answering system to answer an incoming call after 2, 3, 4, 5 or 6 rings; or **Toll saver**. If you choose **Toll saver**, the answering system answers a call after two rings when you have new messages, or after four rings when you have no new messages. This enables you to check for new messages and avoid paying unnecessary long distance charges if you are calling from outside your local area.

Delete all old messages



- Product operating instructions. This limited warranty extends only to the Consumer for Products purchased and used in the United States of America and Canada.
- What must you do if the Product is not free from defects in materials and workmanship during the limited warranty period ("Materially Defective Product")?**
- During the limited warranty period, VTech's authorized service representative will replace a VTech's option, without charge, a Materially Defective Product. If we replace the Product, we may use a new or refurbished replacement part. If we choose to replace the Product, we may replace it with a new or refurbished Product of the same or similar design. We will retain defective parts, modules, or equipment. Replacement of the Product, at VTech's option, is your exclusive remedy. VTech will return the replacement cost of replacement prior to any return placement activity. You must expect the replacement to take approximately 30 days.
- How long is the limited warranty period?**
- The limited warranty period for the Product extends for ONE (1) YEAR from the date of purchase. If VTech replaces a Materially Defective Product under the terms of this limited warranty, this limited warranty also applies to the replacement Product for a period of either (a) 90 days from the date the replacement Product is shipped to you or (b) the time remaining on the original one-year warranty, whichever is longer.
- What is not covered by this limited warranty?**
- This limited warranty does not cover:
- Product that has been subjected to misuse, accident, shipping or other physical damage, improper installation, abnormal operation or handling, neglect, inundation, fire, water or other liquid intrusion.
 - Product that has been subjected to contact with liquid, water, rain, extreme humidity or heavy perspiration, sand, dirt or the like; but then only to the extent the damage was not caused by incorrectly securing the waterproof handset's protective elements (for example, failure to properly close a seal), or such protective elements are damaged or missing (e.g. a cracked battery door), or subjecting a Product to conditions beyond its stated specifications or limits (e.g. 30 minutes in 1 meter of fresh water).
 - Product that has been damaged due to repair, alteration or modification by anyone other than an authorized service representative of VTech;
 - Product to the extent that the problem experienced is caused by signal conditions, network reliability, or cable or antenna systems;
 - Product to the extent that the problem is caused by use with non-VTech accessories;
 - Product whose warranty/quality stickers, product serial number plates or electronic serial numbers have been removed, altered or rendered illegible;
 - Product purchased, used, serviced, or shipped for repair from outside the United States of America or Canada, or used for commercial or institutional purposes (including but not limited to Products used for rental purposes);
 - Product returned without a valid proof of purchase (see item 2 below); or
 - Charges for installation or set up, adjustment of customer controls, and installation or repair of systems outside the unit.
- How do you get warranty service?**
- To obtain warranty service in the United States of America, please visit our website at www.vtechphones.com or call 1 (800) 595-9511. In Canada, go to phones.vtechcanada.com or dial 1 (800) 267-7377.
- THE RBRC SEAL**
- The RBRC seal on the nickel-metal hydride battery indicates that VTech Communications, Inc. is voluntarily participating in an industry program to collect and recycle these batteries at the end of their useful lives, when taken out of service within the United States and Canada.
- The program provides a convenient alternative to placing used nickel-metal hydride batteries into the trash or municipal waste, which may be illegal in your area.
- VTech's participation makes it easy for you to drop off the spent battery at local retailers participating in the RBRC program or at authorized VTech product service centers. Please contact your local RBRC BATTERY for information on participating recycling sites and restrictions in your area. VTech's involvement in this program is part of its commitment to protecting our environment and conserving natural resources.
- The RBRC Seal and 1 (800) 8 BATTERY® are registered trademarks of Call2Recycle, Inc.
- ## FCC, ACTA AND IC REGULATIONS
- ### FCC Part 15
- NOTE: This equipment has been tested and found to comply with the requirements for a Class B digital device under Part 15 of the Federal Communications Commission (FCC) rules. These requirements are intended to provide reasonable protection against harmful interference to a residential installation. This equipment generates, uses and can radiate radio frequency energy and, if not installed and used in accordance with the instructions, may cause harmful interference to radio communications. However, there is no guarantee that interference will not occur in a particular installation. If this equipment does cause harmful interference to radio or television reception, which can be determined by turning the equipment off and on, the user is encouraged to try to correct the interference by one or more of the following measures:
- Reorient or relocate the receiving antenna.
 - Increase the separation between the equipment and receiver.
 - Connect the equipment to an outlet on a circuit different from that to which the receiver is connected.
 - Consult the dealer or an experienced radio/TV technician for help.
- WARNING:** Changes or modifications to this equipment not expressly approved by the party responsible for compliance could void the user's authority to operate the equipment.
- This device complies with Part 15 of the FCC rules. Operation is subject to the following two conditions: (1) this device may not cause harmful interference, and (2) this device must accept any interference received, including interference that may cause undesired operation. Privacy of communications may not be ensured when using this telephone.
- To ensure safety of users, the FCC/ISED has established criteria for the amount of radio frequency energy that can be safely absorbed by a user or bystander according to the intended use of the product. This product has been tested and found to comply with the FCC/ISED criteria. The handset may be held against the ear of the user. The telephone base shall be installed and used such that parts of the user's body other than the hands are maintained at a distance of approximately 20 cm (8 inches) or more.
- NOTE:** Before calling for service, please review the user's manual - a check of the Product's controls and features may save you a service call.
- Except as provided by applicable law, you assume the risk of loss or damage during transit and transportation and are responsible for delivery or handling charges incurred in the transport of the Product(s) to the service location. VTech will return replacement Product under this limited warranty. Transportation, delivery or handling charges are prepaid.
- VTech assumes no risk for damage or loss of the Product in transit. If the Product failure is not covered by this limited warranty, or proof of purchase does not meet the terms of this limited warranty, VTech will notify you and will request that you authorize the cost of replacement prior to any return placement activity. You must expect the cost of replacement and return shipping costs for the replacement of Products that are not covered by this limited warranty.
- What must you return with the Product to get warranty service?**
- Return the entire original package and contents including the Product to the VTech service location along with a description of the malfunction or difficulty; and
 - Include a "valid proof of purchase" (sales receipt) identifying the Product purchased (Product model) and the date of purchase or receipt; and
 - Provide your name, complete and correct mailing address, and telephone number.
- Other limitations**
- This warranty is the complete and exclusive agreement between you and VTech. It supercedes all other written or oral communications related to this Product. VTech provides no other warranties for this Product. The warranty exclusively describes all of VTech's responsibility in making the Product. There are no other express warranties. No one is authorized to make modifications to this limited warranty and you should not rely on any such modification.
- State/Provincial Law Rights: This warranty gives you specific legal rights, and you may also have other rights, which vary from state to state or province to province.
- Limitations: Implied warranties, including those of fitness for a particular purpose and merchantability (an unwritten warranty that the Product is fit for ordinary use) are limited to one year from the date of purchase. Some states/provinces do not allow limitations on how long an implied warranty lasts, so the above limitation may not apply to you. In no event shall VTech be liable for any indirect, special, incidental, consequential, or similar damages (including, but not limited to lost profits or revenue, inability to use the Product or other associated equipment, the cost of substitute equipment, and claims by third parties) resulting from the use of this Product. Some states/provinces do not allow the exclusion or limitation of incidental or consequential damages, so the above limitation or exclusion may not apply to you.
- Please retain your original sales receipt as proof of purchase**
- ## DISCLAIMER AND LIMITATION OF LIABILITY
- VTech Communications, Inc. and its suppliers assume no responsibility for any damage or loss resulting from the use of this user's manual. VTech Communications, Inc. and its suppliers assume no responsibility for any loss or claims by third parties that may arise through the use of this product.
- Company: VTech Communications, Inc.
Address: 9020 SW Washington Square Road - Ste 555 Tigard, OR 97223, United States
Phone: 1 (800) 595-9511 in the U.S. or 1 (800) 267-7377 in Canada