



## 5" WiFi High Definition Video Monitor

LF815HD  
LF815-2HD



### Parent Guide (Canada)

This guide contains important information. Please keep it for future reference.

### Need help?

Visit [leapfrog.ca/support](http://leapfrog.ca/support)

Visit our website [leapfrog.ca](http://leapfrog.ca) for more information about products, downloads, resources and more.



Scan the QR code to enter our support site:



Or go to [leapfrog.ca/support](http://leapfrog.ca/support)

## Important Safety Instructions

The applied nameplate is located at the bottom of the Baby Unit's base. When using your equipment, basic safety precautions should always be followed to reduce the risk of fire, electric shock and injury, including the following:

- Follow all warnings and instructions marked on the product.
- Adult setup is required.
- CAUTION:** Do not install the Baby Unit at a height above 2 meters.
- This product is not a substitute for adult supervision of the infant. Supervising the infant is the parent's or caregiver's responsibility. This product could cease operating, and therefore you should not assume it will continue working properly for any given period of time. Further, this is not a medical device and should not be used as such. This product is intended to assist you in supervising your baby.
- Do not use this product near water. For example, do not use it next to a bath tub, wash bowl, kitchen sink, laundry tub or swimming pool, or in a wet basement or shower.
- CAUTION:** Use only the battery provided. There may be a risk of explosion if a wrong type of battery is used for the Parent Viewer. The battery cannot be subjected to high or low extreme temperature and low air pressure at high altitude during use, storage or transportation. Disposal of battery into fire or a hot oven, or mechanically crushing or cutting or the battery can result in an explosion. Leaving the battery in an extremely high temperature surrounding environment can result in an explosion or the leakage of flammable liquid of gas. Battery subjected to extremely low air pressure may result in an explosion or the leakage of flammable liquid or gas. Dispose of used battery according to the information in **The RBRC seal**.
- Use only the adapters included with this product. Incorrect adapter polarity or voltage can seriously damage the product.



Power adapter information:

Baby Unit Output: 5V DC 1A;  
VTech Telecommunications Ltd.; Model: VT05EUS05100  
Parent Viewer Output: 5V DC 2A;  
VTech Telecommunications Ltd.; Model: VT07EUS05200



Rechargeable battery information:

Zhuhai Great Power Energy Co., Ltd.; Lithium battery,  
3.7V 5000mAh; Model: GSP806090-5Ah-3.7V-1S1P

- The power adapters are intended to be correctly oriented in a vertical or floor mount position. The prongs are not designed to hold the plug in place if it is plugged into a ceiling, under-table or cabinet outlet.
- For pluggable equipment, the socket-outlet shall be installed near the equipment and shall be easily accessible.
- Unplug this product from the wall outlet before cleaning.
- Do not use liquid or aerosol cleaners. Use a damp cloth for cleaning. Do not cut off the power adapters to replace them with other plugs, as this causes a hazardous situation.
- Do not allow anything to rest on the power cords. Do not install this product where the cords may be walked on or crimped.
- This product should be operated only from the type of power source indicated on the marking label. If you are not sure of the type of power supply in your home, consult your dealer or local power company.
- Do not overload wall outlets or use an extension cord.
- Do not place this product on an unstable table, shelf, stand or other unstable surfaces.
- This product should not be placed in any area where proper ventilation is not provided. Slots and openings in the back or bottom of this product are provided for ventilation. To protect them from overheating, these openings must not be blocked by placing the product on a soft surface such as a bed, sofa or rug. This product should never be placed near or over a radiator or heat register.

- Never push objects of any kind into this product through the slots because they may touch dangerous voltage points or create a short circuit. Never spill liquid of any kind on the product.
- To reduce the risk of electric shock, do not disassemble this product, but take it to an authorized service facility. Opening or removing parts of the product other than specified access doors may expose you to dangerous voltages or other risks. Incorrect reassembly can cause electric shock when the product is subsequently used.
- You should test the sound reception every time you turn on the units or move one of the components.
- Periodically examine all components for damage.
- There is a very low risk of privacy loss when using certain electronic devices, such as baby monitors, cordless telephones, etc. To protect your privacy, make sure the product has never been used before purchase, reset the baby monitor periodically by powering off and then powering on the units, and power off the baby monitor if you will not use it for some time.
- Children should be supervised to ensure that they do not play with the product.
- The product is not intended for use by persons (including children) with reduced physical, sensory or mental capabilities, or lack of experience and knowledge, unless they have been given supervision or instruction concerning use of the appliance by a person responsible for their safety.

### SAVE THESE INSTRUCTIONS

- Cautions**
- Use and store the product at a temperature between 32°F (0°C) and 104°F (40°C).
  - Do not expose the product to extreme cold, heat or direct sunlight. Do not put the product close to a heating source.
  - Batteries should not be exposed to excessive heat such as bright sunshine or fire.
  - Warning—Strangulation Hazard—**Children have STRANGLED in cords. Keep this cord out of the reach of children (more than 3 ft (0.9m) away). Do not remove this tag.
  - Never place the Baby Unit(s) inside the baby's crib or playpen. Never cover the Baby Unit(s) or Parent Viewer with anything such as a towel or a blanket.
  - Other electronic products may cause interference with your baby monitor. Try installing your baby monitor as far away from these electronic devices as possible: wireless routers, radios, cellular telephones, intercoms, room monitors, televisions, personal computers, kitchen appliances and cordless telephones.

### Precautions for users of implanted cardiac pacemakers

Cardiac pacemakers (applies only to digital cordless devices): Wireless Technology Research, LLC (WTR), an independent research entity, led a multidisciplinary evaluation of the interference between portable wireless devices and implanted cardiac pacemakers. Supported by the U.S. Food and Drug Administration, WTR recommends to physicians that:

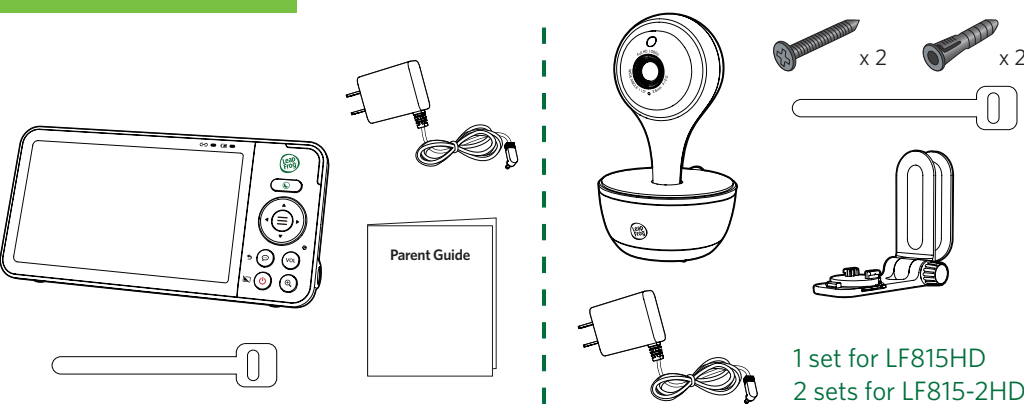
#### Pacemaker patients

- Should keep wireless devices at least six inches from the pacemaker.
- Should NOT place wireless devices directly over the pacemaker, such as in a breast pocket, when it is turned ON. WTR's evaluation did not identify any risk to bystanders with pacemakers from other persons using wireless devices.

#### Electromagnetic fields (EMF)

This LeapFrog product complies with all standards regarding electromagnetic fields (EMF). If handled properly and according to the instructions in this user's manual, the product is safe to be used based on scientific evidence available today.

## What's Included



## Download LeapFrog Baby Care App

Start monitoring from anywhere.

Scan the QR code to download the free LeapFrog Baby Care mobile app, or search "LeapFrog Baby Care" on Apple App Store or Google Play Store.

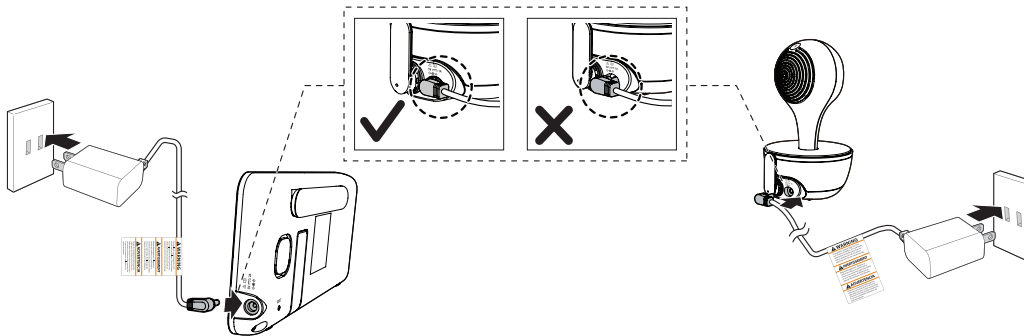


### App Compatibility

- Android™ 6.0 or later
- iOS 12.0 or later.

## Connect, Charge, and Power On the Baby Monitor

### 1. Connect the Baby Monitor



## 2. Charge the Parent Viewer Battery

### Notes:

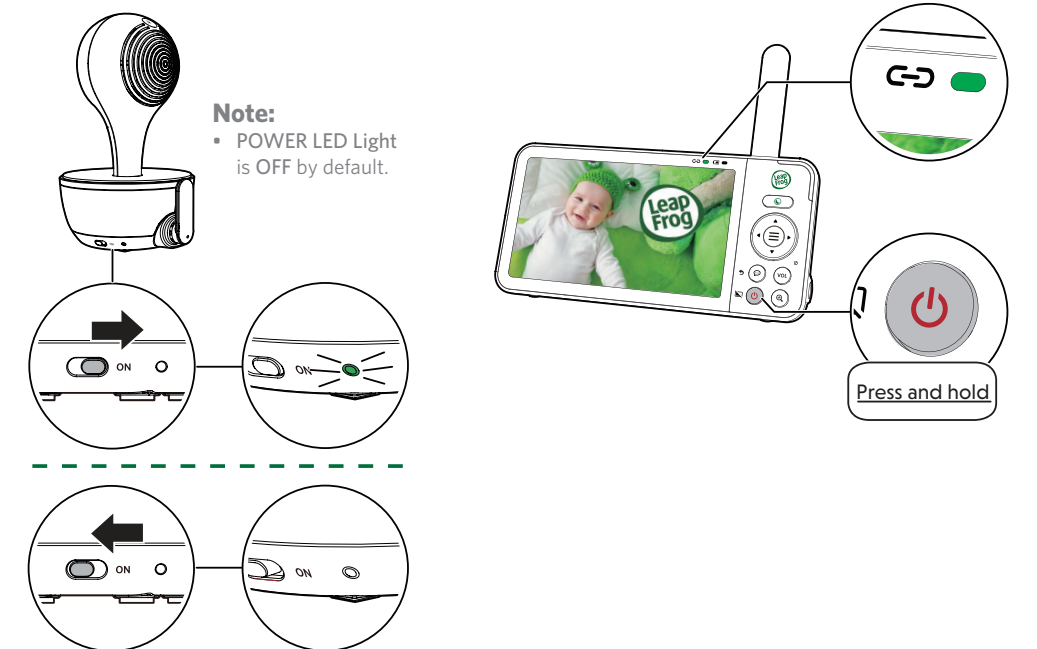
- Before using the baby monitor for the first time, charge the Parent Viewer battery for 12 hours. When the Parent Viewer battery is fully charged, the battery icon becomes solid.
- The standby time varies depending on your actual usage time and the age of the battery.

The battery icon on the screen indicates the battery status:

Battery Indicators	Battery Status	Action
The screen displays . The  light flashes.	The battery is low in power and may only be used for a short time.	Charge without interruption (about 30 minutes).
The battery icon becomes solid .	The battery is fully charged.	To keep the battery charged, connect it to AC power when not in use.

## 3. Power On or Off the Baby Monitor

- Slide the On/Off switch to **ON** to power on your Baby Unit.
- Press and hold until the welcome screen appears.



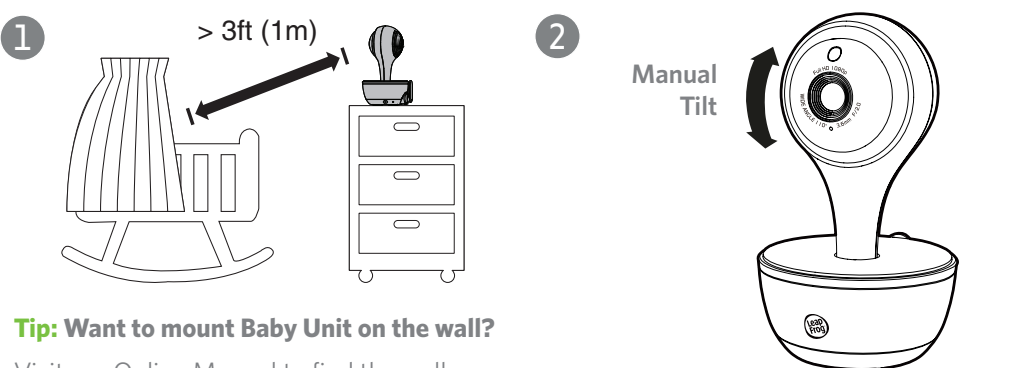
### Note:

- POWER LED Light is OFF by default.

## 4. Status Check

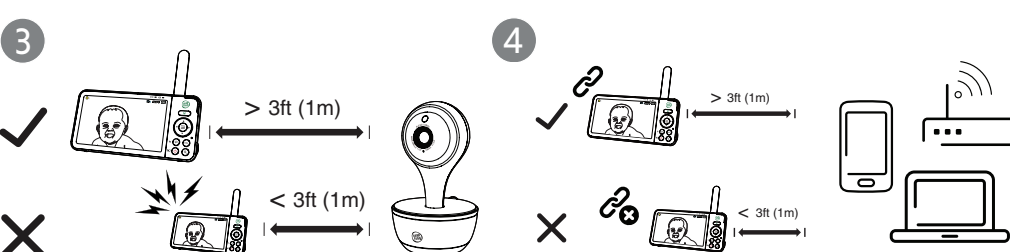
Once your Baby Unit and Parent Viewer are powered on and connected, your Parent Viewer displays video from Baby Unit, and the LINK LED light turns on.

## 5. Positioning the Baby Monitor



### Tip: Want to mount Baby Unit on the wall?

Visit our Online Manual to find the wall mounting tutorial video and step-by-step guide.



### Note:

To avoid interference from other electronic devices, place your baby monitor at least 3 feet (1 meter) away from devices such as wireless routers, microwaves, cell phones and computers.

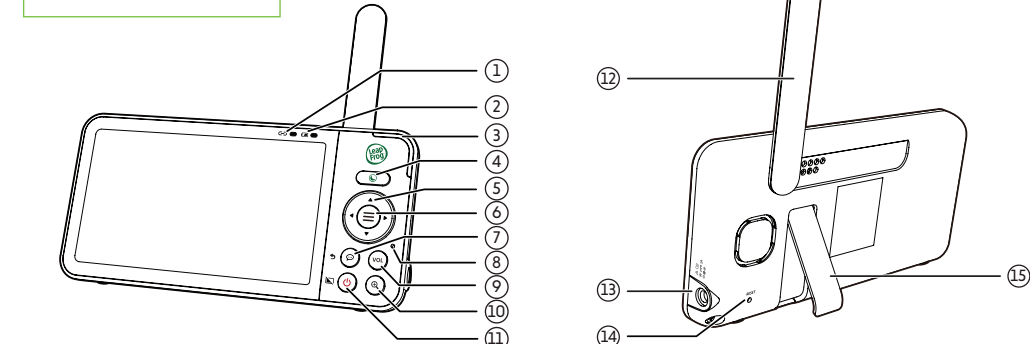
### Caution:

The default volume of your Parent Viewer is level 3, and the maximum volume is level 5. If you experience a screeching noise from your baby monitor while positioning:

- Make sure your Baby Unit and Parent Viewer are more than 3 feet (1 meter) apart, **OR**
- Lower the volume of your Parent Viewer.

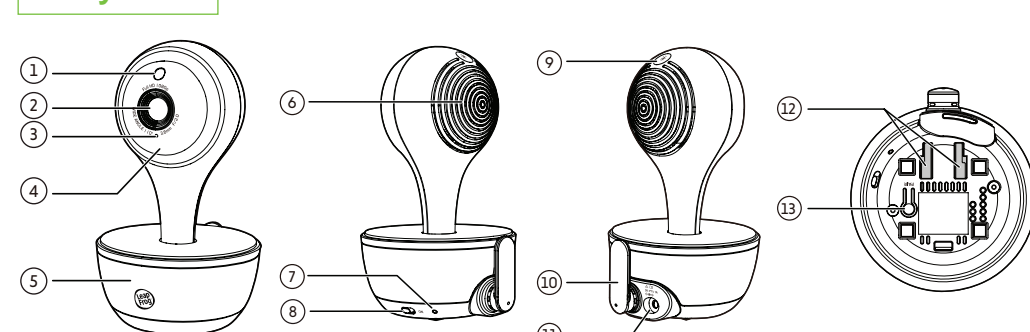
## Overview

### Parent Viewer



- |   |   |               |
|---|---|---------------|
| 1   | 5   | 10            |
| 2   | 6   | 11            |
| 3 3-level sound indicator light   | 7   | 12 Antenna    |
| 4   | 8 Microphone  | 13 Power jack |
| <ul style="list-style-type: none"><li>Select black-and-white or color night vision viewing mode.</li><li>Adjust night light brightness.</li></ul> | 9 <b>VOL</b> Volume <ul style="list-style-type: none"><li>View the volume adjustment bar.</li></ul> | 14 RESET      |
|   |   | 15 Stand      |

### Baby Unit



- |                          |  |
|--------------------------|--|
| 1 Light sensor           | 9  |
| 2 Camera                 | <ul style="list-style-type: none"><li>Press to turn the night light on or off.</li></ul>   |
| 3 Microphone             | 10 Antenna   |
| 4 Infrared LEDs          | 11 Power jack  |
| 5 Night light            | 12 Wall mount holes  |
| 6 Speaker                | 13 <b>PAIR</b> key <ul style="list-style-type: none"><li>The Parent Viewer and Baby Unit(s) provided are already paired.</li></ul> |
| 7 <b>POWER</b> LED Light |  |
| 8 On / Off switch        |  |



Parent Viewer Icons

Main Menu Icons

Monitoring mode (For LF815-2HD only)

Night light

Lullaby

Detection - Sound, motion, temperature

Parent Unit settings

Baby Unit settings

General settings

Status icon

Test the Location

Three Ways to Connect Your Baby Monitor

Direct mode

Wi-Fi Router mode

Test the Location

Protect Your Privacy and Online Security

Night Light

Cable Management

The RBRC seal

Disclaimer and Limitation of Liability

FCC and IC regulations

Customer Support

Find the Answer to Your Questions

Technical Specifications

Warranty