

Go to [www.vtechcanada.com](http://www.vtechcanada.com)  
for latest VTech product news.

RM5754HD  
RM5754-2HD

## 5-inch Smart Wi-Fi 1080p Video Monitor



VTech 5-inch Smart Wi-Fi 1080p Video Monitor allows you to stay close to your baby when you are on the move or away. This monitor is Wi-Fi enabled. At best, it uses your home wireless network to stream live video and audio through the HD camera unit and 5-inch color screen parent unit. It allows you to maintain a constant connection to your baby.

You can also monitor from your smartphone and mobile tablet. VTech 5-inch Smart Wi-Fi 1080p Video Monitor uses **MyVTech Baby 1080p** app to let you instantly see and hear what's happening with your baby from anywhere in the world. The app can be downloaded from the App Store or the Google Play™ Store, directly from your smartphone or mobile tablet.



## Quick start guide (Canada version)



Document order number: 91-011935-010-100  
All rights reserved. 12/19, RM5754-XHD\_CA\_QSG\_V1  
© 2019 VTech Technologies Canada Ltd.  
Specifications are subject to change without notice.



Android™ and Google Play™ are trademarks of Google Inc.  
App Store is a trademark of Apple Inc., registered in the U.S. and other countries.  
IOS is a trademark or registered trademark of Cisco in the U.S. and other countries and is used under license.

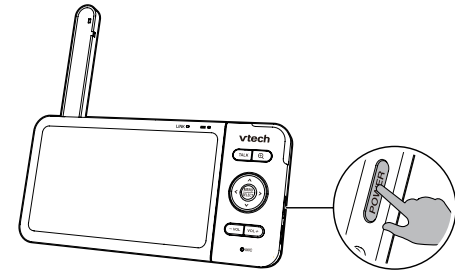


## BASIC OPERATION

Connect and charge the parent unit battery before use. See the installation guide for detail.

After the parent unit is fully charged, press **POWER** until the welcoming screen appears.

After powering up your video monitor, the parent unit streams live video in local mode. We recommend you follow the instructions on screen to set up home Wi-Fi network with your monitor for functionality enhancements and mobile access. See [Auto software and firmware update](#) and [Download app for mobile access](#) in this quick start guide.

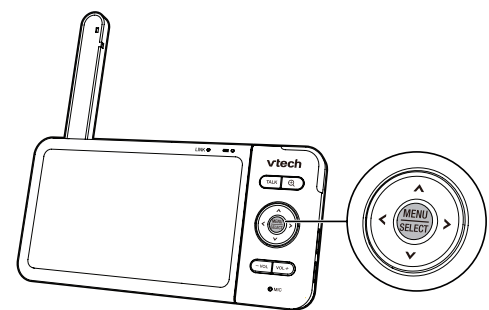


### NOTE

- For more information on **Local mode** and **Remote mode**, see the installation guide.

### Use the menu

Press **MENU** on the parent unit to enter the main menu, choose a menu item, or save a setting. You can use the parent unit menu for advanced settings or operations, such as to play or stop lullaby, or adjust the sound detection setting.

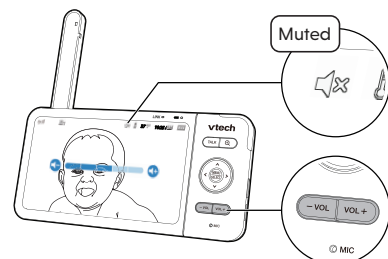


While in the menu:

- Press **▲**, **▼**, **◀** or **▶** to scroll among the menu options.
- Press **SELECT** to select an item.
- Press **TALK** to return to the live video.

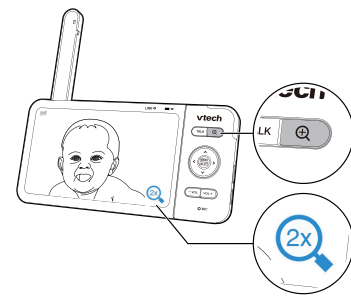
### Adjust speaker volume

Press **-VOL / VOL+** to adjust your parent unit speaker volume. It determines the volume of sound transmitted from your camera unit.



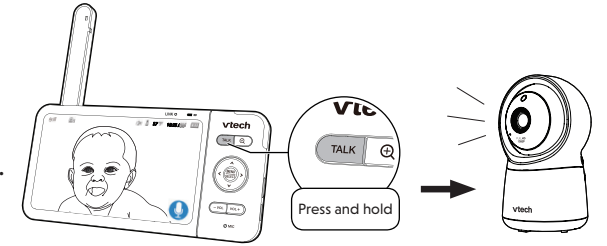
### Zoom

Press **+** to zoom in or out.



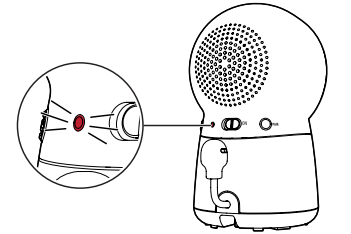
### Talk to your baby via the camera unit

- Press and hold the **TALK** key.
- When the **🗣️** icon displays on screen, speak to your parent unit. Your voice is transmitted to the camera unit.
- When finish talking, release the **TALK** key and hear your baby again.



### Turn on/off camera's status LED

You may set the status LED indicator of your camera unit on or off. Go to



### Connection status

The following icons shown in the parent unit indicate the connection status:



Local mode connection - indicates the signal strength when the parent unit and camera unit connect directly.

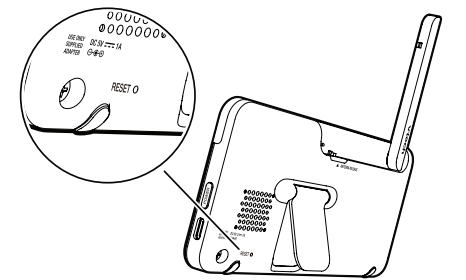


Wi-Fi router connection - indicates the signal strength when the parent unit and camera unit connect to the home Wi-Fi network.

### TIP

You can reset the parent unit by pressing the **RESET** key at the back of the unit.

Use a pin and insert it into the hole on the back of the parent unit, and then press the button inside.





## AUTO SOFTWARE AND FIRMWARE UPDATE

To ensure that your HD video monitor is always at its best performance, the parent unit will prompt a message and ask you to update its software and the camera unit's firmware when there are new versions available.

- Follow the instructions on the parent unit screen to update your HD video monitor. If you skip the updates, the parent unit and camera unit will be updated automatically when the parent unit is powered off, and then powered on again.

### Connect your HD video monitor with home Wi-Fi network

- You must connect your video monitor to your secured home Wi-Fi network in order to receive the latest software and firmware updates. To set it up, go to



> **Configure Wi-Fi.**



## GET HELP WITH THE ONLINE TOPICS

Driven by system updates, the software, online help topics, and online FAQs will be updated periodically.

For latest information and supports, go and check the online help topics and online FAQs.

Use your smartphone or mobile device to access our online help.

- Go to <https://help.vtechphones.com/rm5754hd> or scan the QR code on the right.
- If you would like to contact us, visit <https://help.vtechphones.com/cs/rm5754hd>.

RM5754HD online help



## DOWNLOAD APP FOR MOBILE ACCESS

- 1 You can download the free **MyVTech Baby 1080p** mobile app and install it to a mobile device, then use your mobile device and the mobile app to monitor your areas remotely.

1. Press **MENU** when the parent unit is idle, then go to



> **Download mobile app.**

2. Scan the QR code in the parent unit to download the app into your mobile device.
3. Follow the instructions in the mobile app to set up and pair your camera unit to the mobile app.

Alternatively, you can download the mobile app from the App Store or Google Play store.

### Install MyVTech Baby 1080p mobile app

1. Browse the App Store or the Google Play store .
2. Search for the mobile app with the keyword "myvtech baby 1080p".
3. Download and install the **MyVTech Baby 1080p** mobile app to your mobile device.

OR

Scan the QR codes below to get the app.



NOTE

- Make sure your mobile device meets the minimum requirement for the mobile app.

### Minimum requirement

The mobile app is compatible with:

- Android™ 5.0 or later; and
- iOS 8.0 or later.



- 2 After installing the mobile app, follow the instructions in the mobile app and parent unit to set up and pair your camera unit.

### In your mobile device:

1. Tap to run the mobile app in your mobile device, and then create a camera account.
2. We recommend that you use common webmail services, such as Google Gmail for registration of your camera account. Check your email (and Spam folder), and activate your new camera account via the email link, then sign in to your account.
3. Follow the instructions in the mobile app to pair the camera. Tap **+** in the mobile app to get started.

NOTE

- In the mobile app, tap in the camera list to display the side menu, and then tap **Help** to go to our online support and read the online help topics for operation instructions. You can also scan the QR code on the right, or go to <https://help.vtechphones.com/rm5754hd>, to read the online help topics in a web browser.

RM5754HD online help



Driven by Android and iOS updates, **MyVTech Baby 1080p** mobile app, online help topics, and online FAQs will be updated periodically.

Download and install the latest mobile app. For latest information and supports, go and check the online help topics and online FAQs.