

Go to www.vtechcanada.com
to register your product for
enhanced warranty support and
the latest VTech product news.

VC7151
VC7151-101
VC7151-109
VC7152-201
VC7152-301



Wireless Monitoring System
with Cordless Telephone

vtech[®]

Sensors and Handset
Registration Guide
(Canada version)

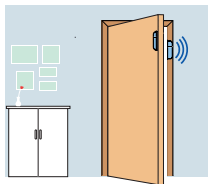


How the system works



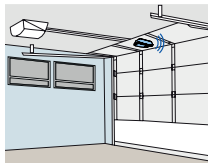
Open/Closed sensor

Apply this magnetic Open/Closed sensor to a door, window, or medicine cabinet to know if it is open or closed.



Garage Door Sensor

Detects whether the garage door is open or closed.



Telephone system

Includes a telephone base and cordless handset (some models include additional handsets). The base and handset screens show call information and sensor alerts. The sensor sends alerts to the phone system or sends remote alert calls to the phone numbers you have specified.

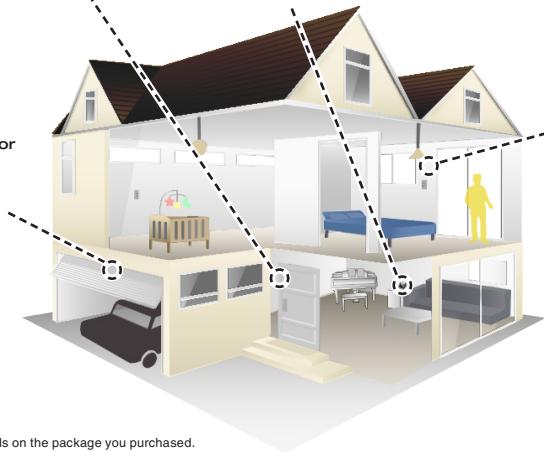
Local alert



Remote alert



* To set telephone numbers for remote calls, please refer to the **Sensor mode** section in the **Abridged User's Manual**.



Motion Sensor (sold separately)

Lets you know when there are visitors, intruders, or pets moving around your home.



* The combination of sensors depends on the package you purchased.

Introduction

This Wireless Monitoring System with VTech ULE consists of the telephone system, Garage Door Sensor and Open/Closed Sensor.

Telephone system - Includes a telephone base and cordless handset (some models include additional handsets). The base and handset screens show call information and sensor alerts. The sensor sends alerts to the phone system or sends remote alert calls to other numbers you have specified.

Open/Closed Sensor - Apply this magnetic Open/Closed Sensor to a door, window, or medicine cabinet to know if it is open or closed.

Garage Door Sensor - Detects when the garage door is open or closed.

Motion Sensor (sold separately) - Lets you know when there are visitors, intruders, or pets moving around your home.

If you purchased new accessory sensors and/or handsets, or accidentally deregistered your sensors, you will have to register them to the telephone base.

After you have registered the sensors to the telephone base, you can then mount the sensors.

Add a new sensor

You can also add new ULE Garage Door Sensor (**VC7001**), Open/Closed sensor (**VC7002**), or Motion Sensor (**VC7003**) to your telephone system (all purchased separately). You can register up to 400 ULE sensors to the telephone base.

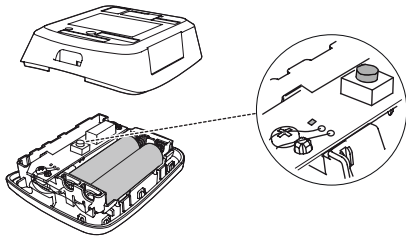
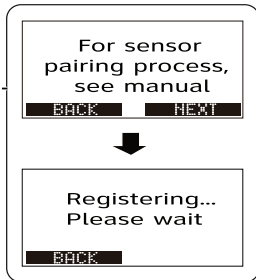
To register a new VC7001 Garage Door Sensor to the telephone base:

NOTE

- Make sure you have installed the battery in the sensor before registering.

1. Press **MENU** on the telephone base when idle.
2. Scroll to **Sensor setup**, and then press **SELECT**.
3. Scroll to **Add new sensor**, and then press **SELECT**. The screen displays **For sensor pairing process, see manual**.
4. Press and hold the pair button on the Garage Door Sensor, until the LED light flashes red.
5. Press **NEXT** on the telephone base.

When the registration process is complete, the red LED light on the sensor will remain steady for about two seconds, and then turn off. The registration process takes about 90 seconds to complete.

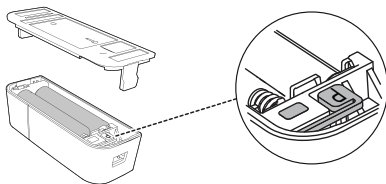
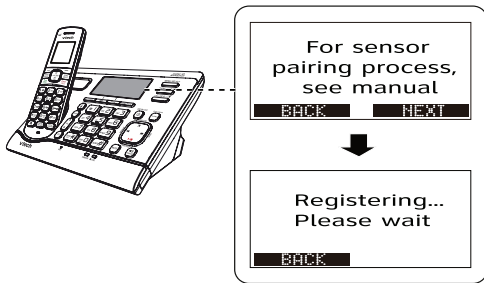


To register a new VC7002 Open/Closed Sensor to the telephone base:

NOTE

- Make sure you have installed the battery in the sensor before registering.
1. Press **MENU** on the telephone base when idle.
 2. Scroll to **Sensor setup**, and then press **SELECT**.
 3. Scroll to **Add new sensor**, and then press **SELECT**. The screen displays **For sensor pairing process, see manual**.
 4. Press and hold the **P** button on the Open/Closed Sensor, until the LED light flashes red.
 5. Press **NEXT** on the telephone base.

When the registration process is complete, the red LED light on the sensor will remain steady for about two seconds, and then turn off. The registration process takes about 90 seconds to complete.



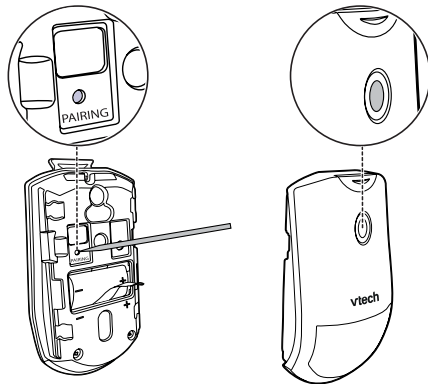
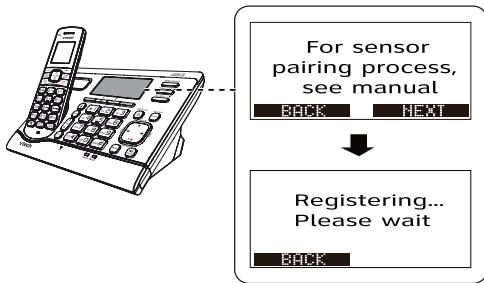
To register a new VC7003 Motion Sensor to the telephone base:

NOTES

- Make sure you have installed the battery in the sensor before registering.
- If you have just inserted the battery in the sensor, wait for the red LED on the sensor to stop flashing.

1. Press **MENU** on the telephone base when idle.
2. Scroll to **Sensor setup**, and then press **SELECT**.
3. Scroll to **Add new sensor**, and then press **SELECT**. The screen displays **For sensor pairing process, see manual**.
4. Use a narrow pointed object such as a pen to press and hold the **PAIRING** button on the Motion Sensor, until the LED light at the front side flashes green.
5. Press **NEXT** on the telephone base.

When the registration process is complete, the green LED light on the sensor will remain steady for about two seconds, and then turn off. The registration process takes about 90 seconds to complete.



Add a new handset

You can add new DECT 6.0 cordless handset (**VC7100**) (purchased separately) to your telephone system. This telephone system accommodates up to five DECT cordless handset.

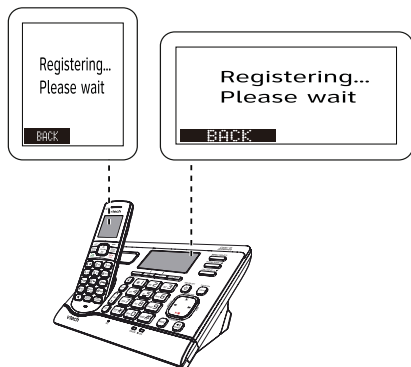
To register a new VC7100 handset to the telephone base:

NOTE

- Make sure you have installed the battery in the handset before registering.

Place the new/non-registered handset in the telephone base. The handset and telephone base show **Registering... Please wait**.

- The handset and telephone base show **HANDSET X registered** and you hear a beep when the registration process completes. The registration process takes about 90 seconds to complete.



Disclaimer

This product is not designed for security purposes. When properly installed and maintained, this product may in some cases reduce the risk of burglary, fire, robbery or other events occurring without providing an alarm. VTech is not responsible for losses, injury, or damage resulting from the use of this product.

This product is covered by U.S. Patent #8,825,043. Other patents may be pending.



Specifications are subject to change without notice.
© 2016 for VTech Technologies Canada Ltd.
All rights reserved. 02/16. VC715X_CA_Registration_Guide_V2.0

