

Go to www.vtechcanada.com
for the latest VTech product news.

VM2251
VM2251-2
Video Monitor



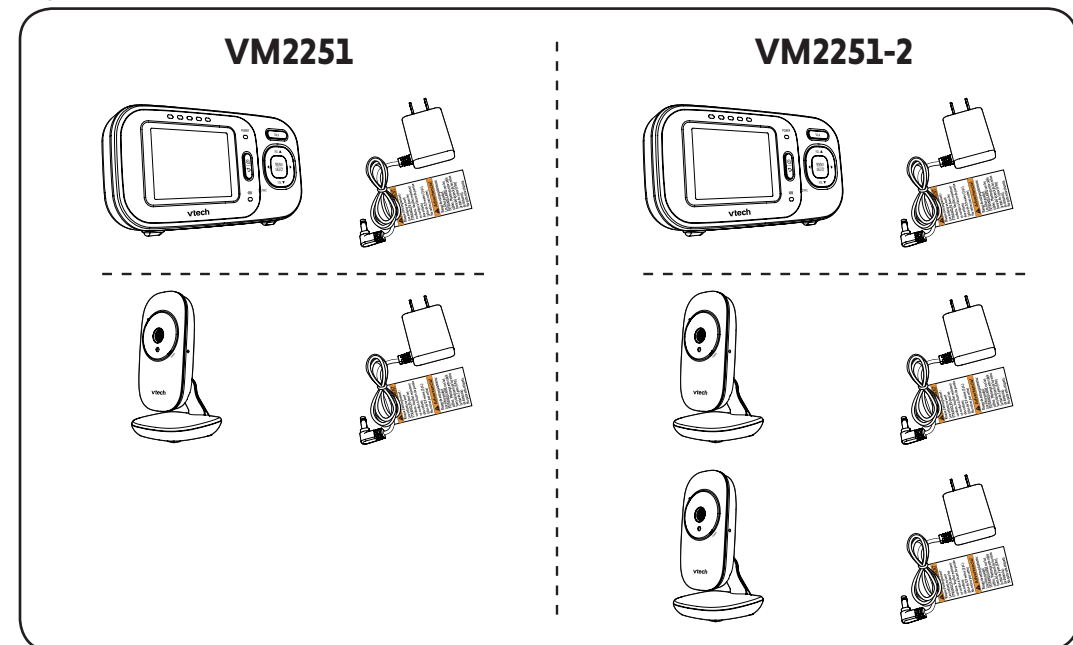
vtech

Quick start guide
(Canada version)

Specifications are subject to change without notice.
© 2018 VTech Technologies Canada Ltd.
All rights reserved. 11/18. VM2251-X_CA_QSG_V6.
Document order number: 96-012009-030-100



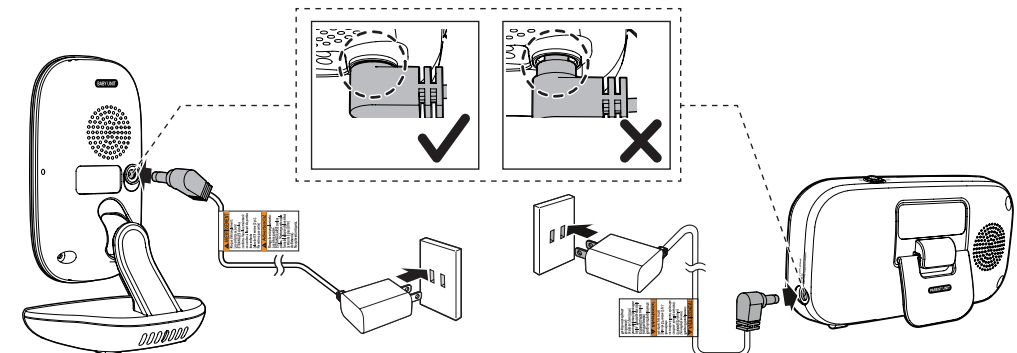
WHAT'S IN THE BOX



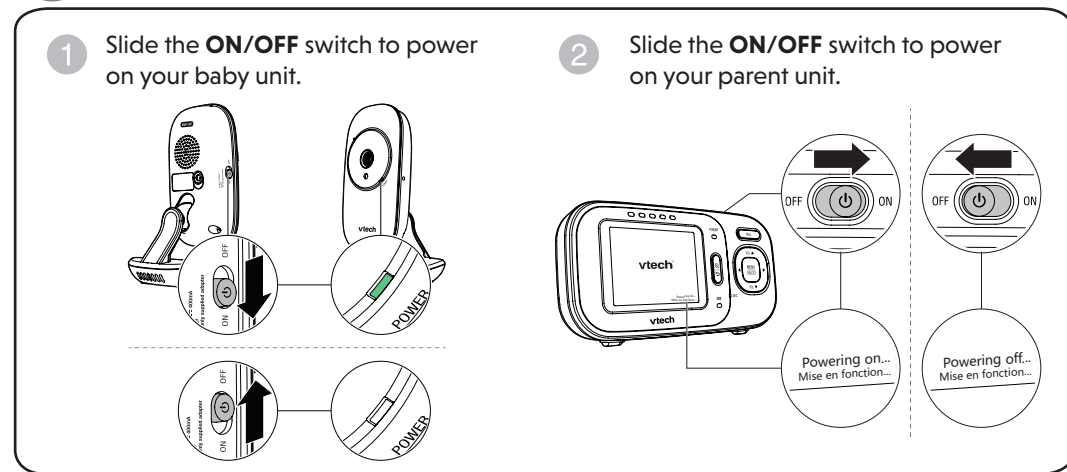
1 CONNECT THE BABY MONITOR

NOTES

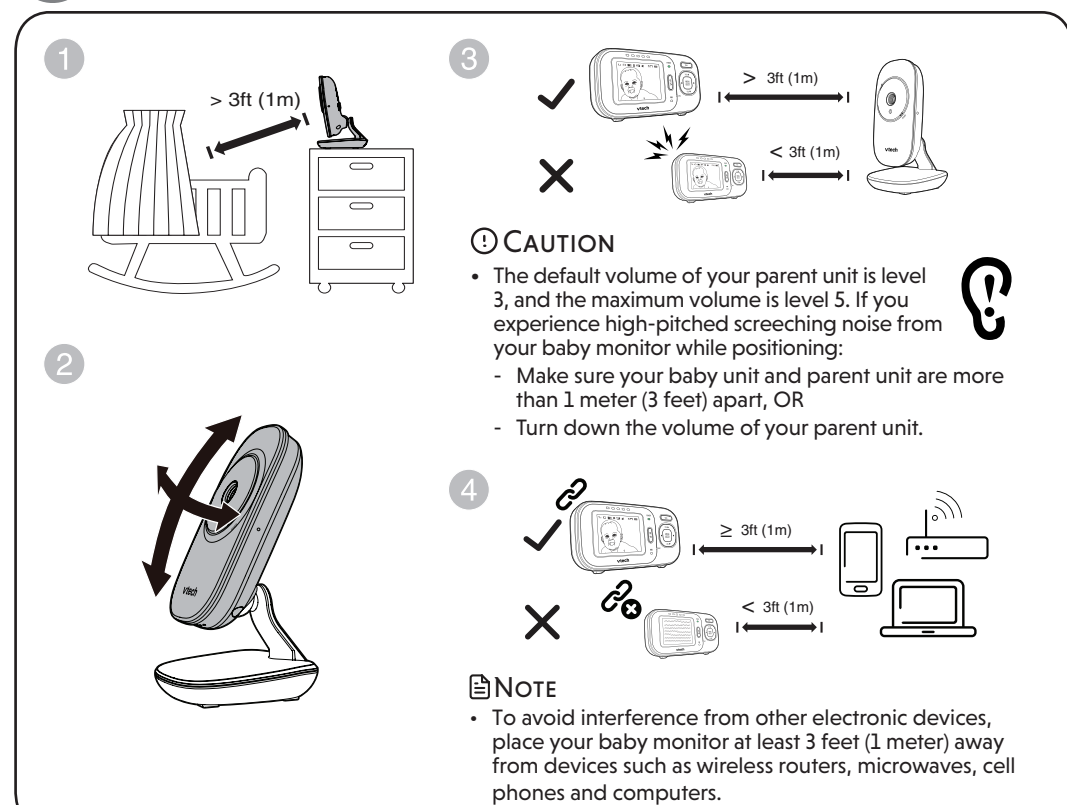
- The rechargeable battery is pre-installed in your parent unit.
- Use only the power adapters supplied with this product.
- Make sure the baby monitor is not connected to the switch controlled electric outlet.
- Connect the power adapters in a vertical or floor mount position only. The adapters' prongs are not designed to hold the weight of baby monitor, so do not connect them to any ceiling, under-the-table, or cabinet outlets. Otherwise, the adapters may not properly connect to the outlets.
- Make sure the parent unit, the baby unit and the power adapter cords are out of reach of children.



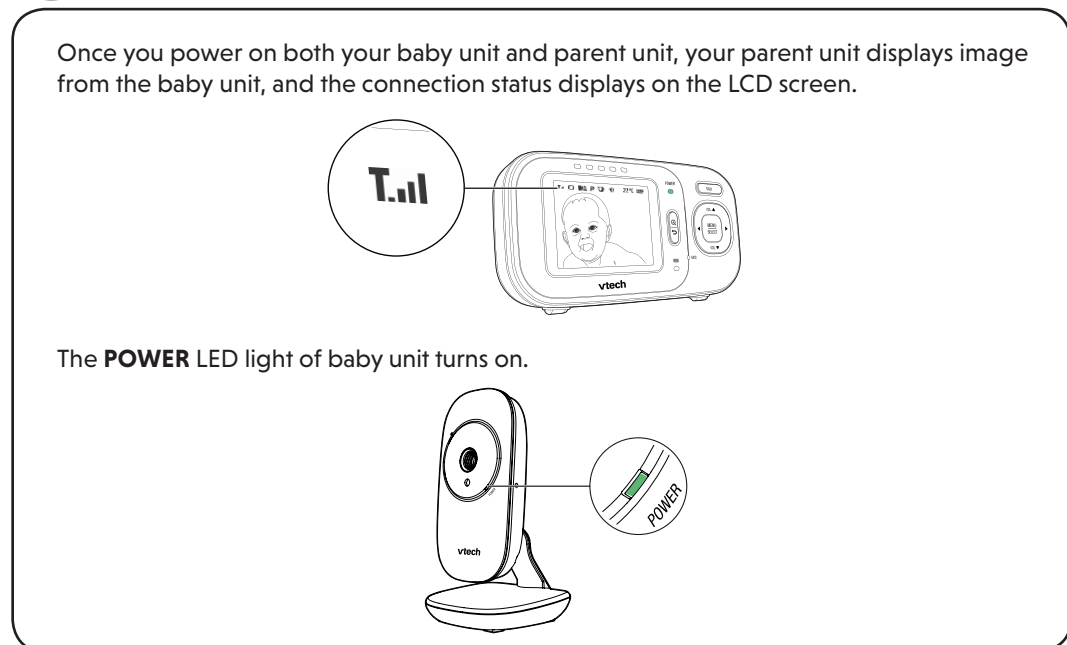
2 POWER ON THE BABY MONITOR



3 POSITIONING THE BABY MONITOR



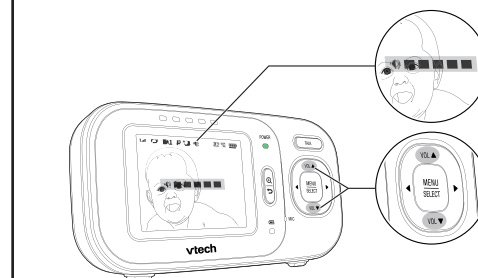
4 STATUS CHECK



BASIC OPERATION - PARENT UNIT

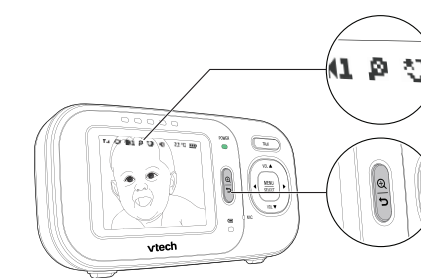
Adjust speaker volume

Press **VOL▲ / VOL▼** to adjust your parent unit speaker volume. It determines the volume of sound transmitted from your baby units.



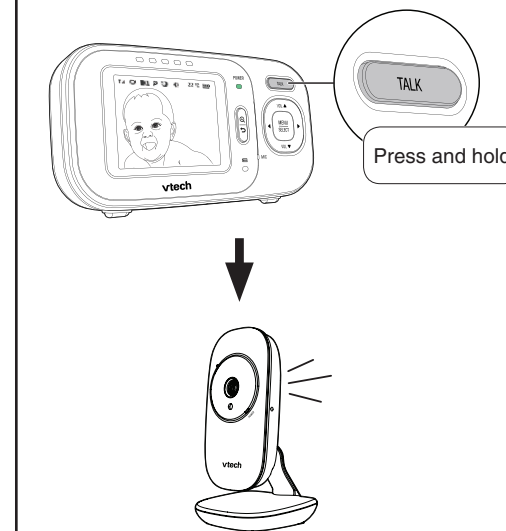
Zoom

Press **Q** to zoom in or out.



Talk to your baby unit

Press and hold **TALK** and speak to your parent unit. Your voice is transmitted to the baby unit.

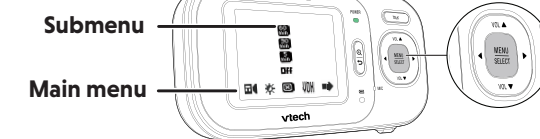


Use the menu

Press **MENU SELECT** to enter the menu, choose a menu item, or save a setting. You can use the parent unit for advanced settings or operations, such as to adjust the baby unit sound sensitivity or the temperature range for alerts.

While in the menu:

- Press **◀** or **▶** to scroll among the menu options.
- Press **MENU SELECT** or **▲** to enter the desired submenu.
- Press **▲** or **▼** to select an item.
- Press **MENU SELECT** to confirm your selection.
- Press **↶** to exit the menu or submenu.



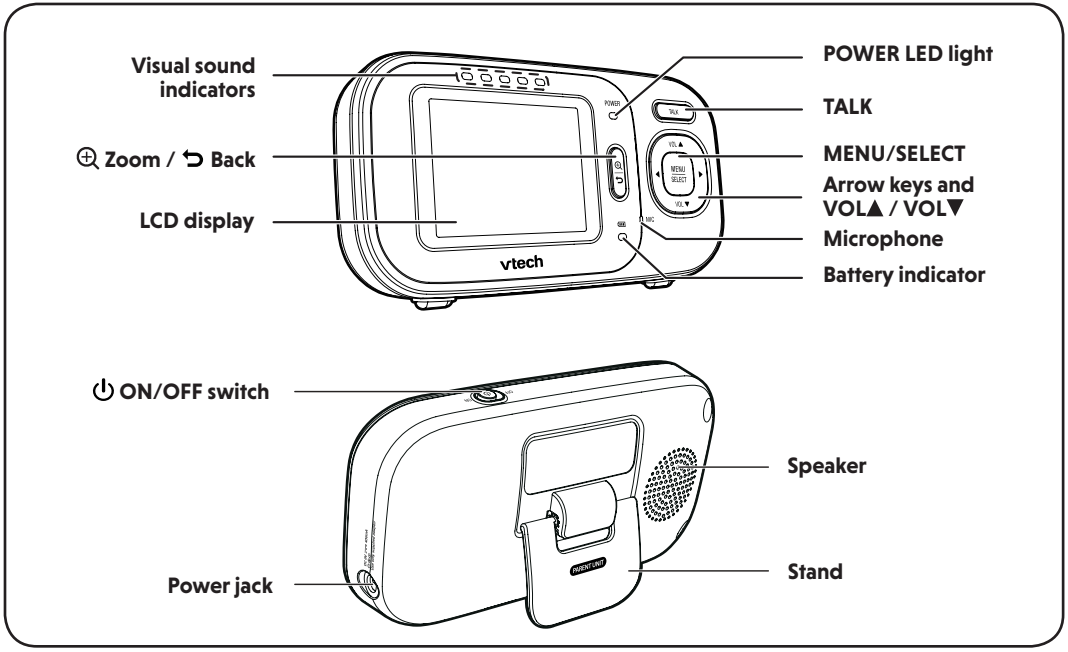
Set screen off timer

- Press **MENU SELECT** to enter the main menu when the parent unit is idle.
- Press **◀** or **▶** to choose **☒**, then press **MENU SELECT** or **▲** to open the submenu.
- Press **▲** or **▼** to choose the desired time period to automatically turn off screen (**OFF** / **5 min** - 5 min. / **30 min** - 30 min. / **60 min** - 60min.), then press **MENU SELECT** to confirm your selection.

NOTE

- Press any keys on the parent unit to turn on the screen again.

OVERVIEW - PARENT UNIT



SOUND SENSITIVITY AND SOUND ACTIVATION

Sound sensitivity

With sound sensitivity setting, you can choose to hear sounds from the baby unit all the time, or to hear sounds that exceed a certain level. The default level **Highest** allows you to hear all sounds (including background noises).

If you set the sound sensitivity to a lower level (e.g. **Medium**), you will only hear sounds that exceed the selected level. The baby unit may not detect soft sounds, and the parent unit speaker may remain quiet.

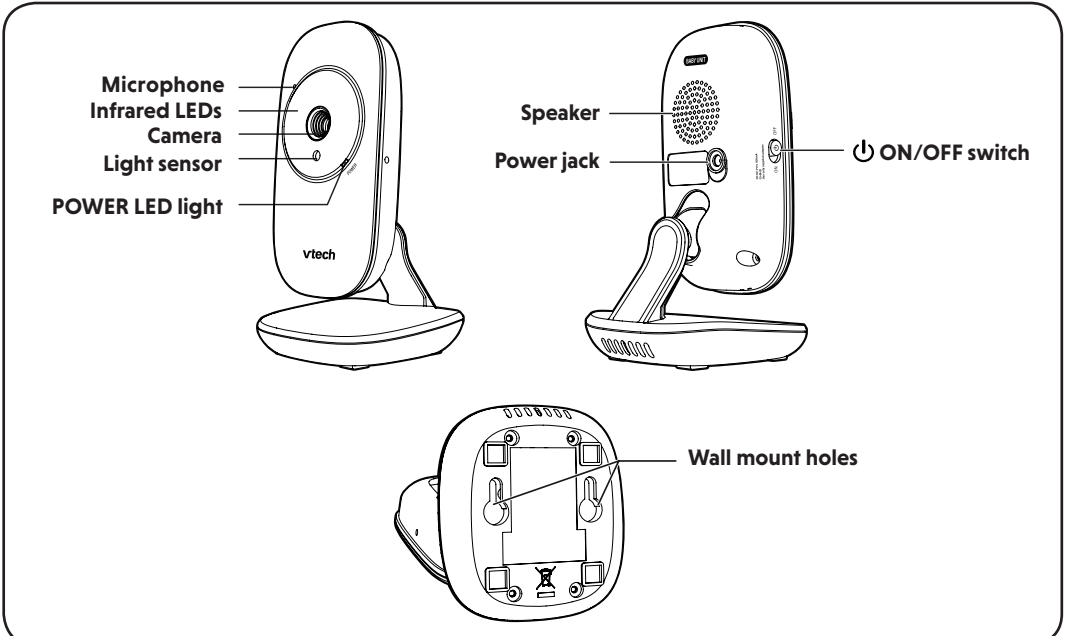
For details, please see **Adjust the sound sensitivity of the baby unit** in the User's manual.

Sound activation

When sound activation is on, the parent unit screen stays off to save power when the baby unit detects no sound.

Once the baby unit detects sounds that are louder than the chosen sound sensitivity level, the parent unit screen turns on automatically. It will then turn off again after 50 seconds of no sound detection.

OVERVIEW - BABY UNIT



NIGHT VISION

The baby unit has infrared LEDs that allow you to see your baby clearly at night or in a dark room. When the baby unit being viewed detects low light levels, the infrared LEDs are switched on automatically. The images from the baby unit are in black and white, and appears on the screen.

NOTES

- It is normal if you see a short white glare on your parent unit screen as the baby unit is adapting to the dark environment.
- When the infrared LEDs are on, the images are in black and white. This is normal.

TIP

- Depending on the surroundings and other interfering factors, like lightings, objects, colors and backgrounds, the display resolution may vary. Adjust the baby unit's angle or place the baby unit at a higher level to prevent glare and blurry display.

MOUNT THE BABY UNIT FOR DRY WALL (OPTIONAL)

Items to purchase

You will need to purchase the following items separately to mount your baby unit:

- 2 screws
- 2 anchors

NOTE

- The types of screws and anchors you need depend on the composition of the wall.

1. Check for reception strength and camera angle before drilling the holes.

Use a pencil to mark two holes in parallel. Make sure they are the same distance apart as the wall mount holes on the baby unit.

2. Drill two holes in the wall. If you drill the holes into a stud, go to step 3.

-OR-

If you drill the holes into an object other than a stud, insert the wall anchors into the holes. Tap gently on the ends with a hammer until the wall anchors are flush with the wall.

3. Insert the screws into the holes and tighten the screws until only 1/4 inch of the screws are exposed.

4. Align the wall mount holes on the baby unit with the screws on the wall. Slide the baby unit down until it locks into place.

5. Adjust the camera angle.

FOR VM2251-2 ONLY

Status check - Two baby units

If you are viewing baby unit **1**, the **POWER LED** light of baby unit **1** turns on. As baby unit **2** is not being viewed, its **POWER LED** light flashes.

NOTE

- If you power on only one baby unit, your parent unit may display **1** and the **POWER LED** light flashes. Press **MENU/SELECT** and then **◀** or **▶** to choose **1**. Press **MENU/SELECT** or **▲** to open the submenu. Press **▲** or **▼** to select the baby unit you have powered on.

Change different views - Patrol

Press **MENU/SELECT** and then **◀** or **▶** to choose **1**. Press **MENU/SELECT** or **▲** to open the submenu. After that, press **▲** or **▼** to select **1** to enter **PATROL** mode to alternately view the image from one baby unit to the next one in every 10 seconds.

Change different views - Single-cam

Press **MENU/SELECT** and then **◀** or **▶** to choose **1**. Press **▲** to open the submenu. After that, press **▲** or **▼** to select a camera number to enter **SINGLE-CAM** mode.