

Go to [www.vtechcanada.com](http://www.vtechcanada.com) for the latest VTech product news.

VM5251  
VM5251-2

Full Color Video Monitor



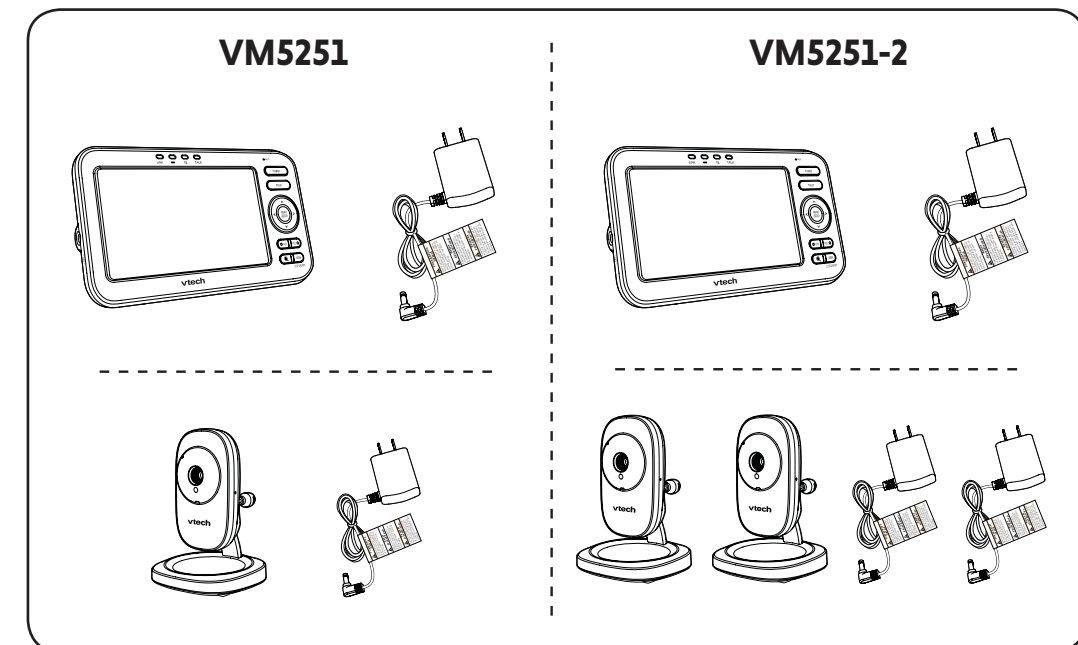
Quick start guide  
(Canada version)

vtech®

Document order number: 96-012736-010-100  
08/19 VM5251-X, Apptech, CA, Q.S.G., V4.  
© 2019 VTech Technologies Canada Ltd. All rights reserved.  
Specifications are subject to change without notice.



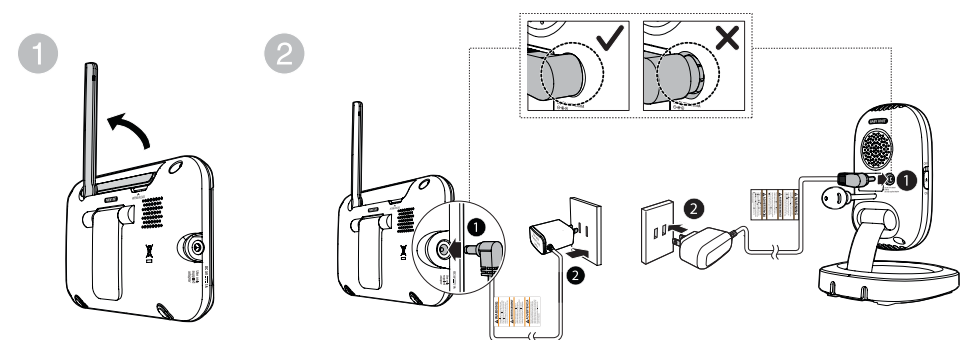
## WHAT'S IN THE BOX



## 1 CONNECT THE BABY MONITOR

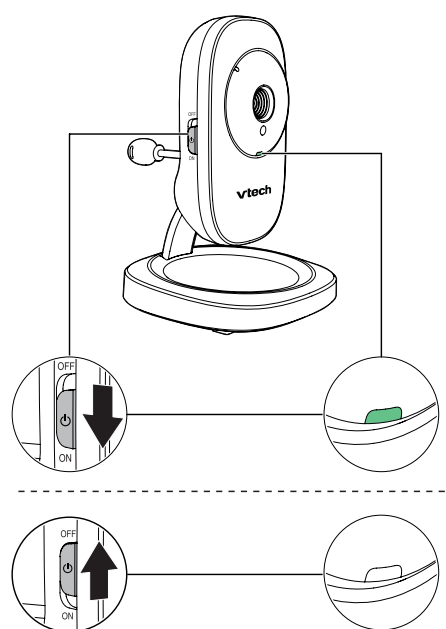
### NOTES

- The rechargeable battery in the parent unit is built-in.
- Use only the power adapters supplied with this product.
- Make sure the baby monitor is not connected to a switch-controlled electric outlet.
- Connect the power adapters in a vertical or floor mount position only. The adapters' prongs are not designed to hold the weight of baby monitor, so do not connect them to any ceiling, under-the-table, or cabinet outlets. Otherwise, the adapters may not properly connect to the outlets.
- Make sure the parent unit, the baby units and the power adapter cords are out of reach of children.

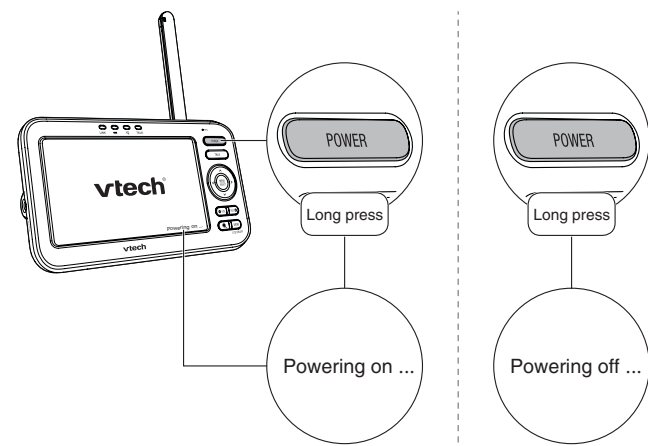


## 2 POWER ON OR OFF THE BABY MONITOR

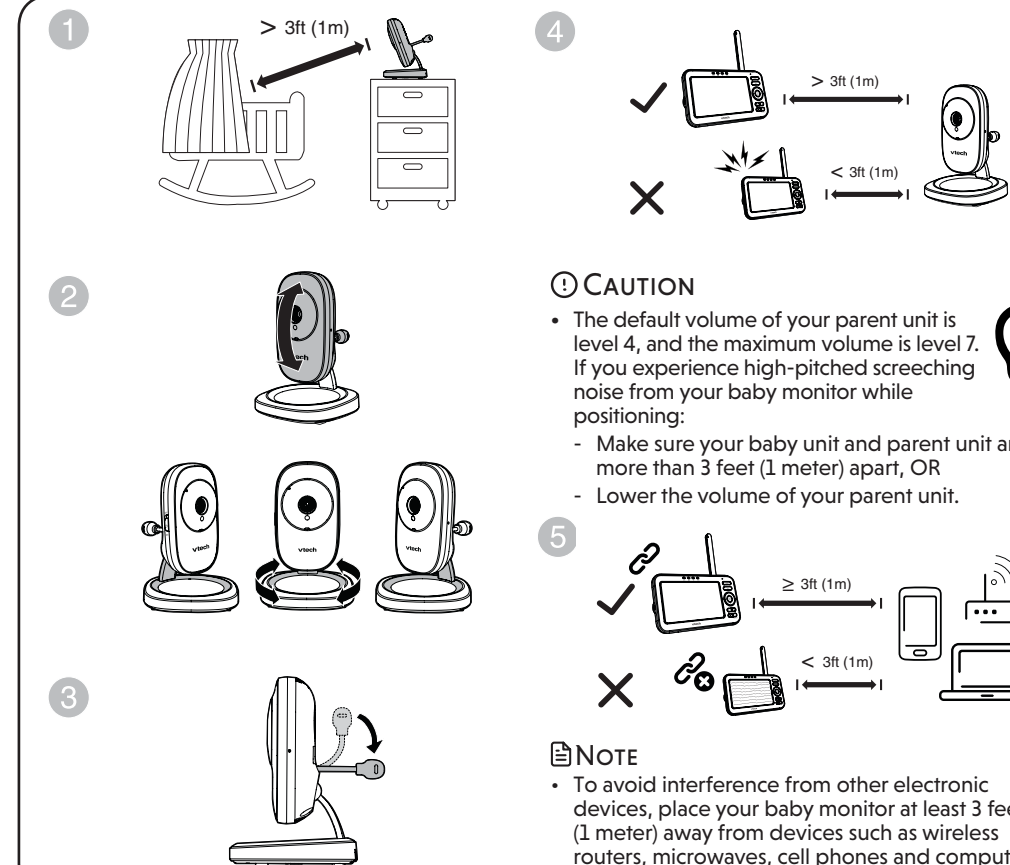
1 Slide the **ON/OFF** switch to power on or off your baby unit.



2 Press and hold **POWER** to power on or off your parent unit.



## 3 POSITIONING THE BABY MONITOR



**CAUTION**

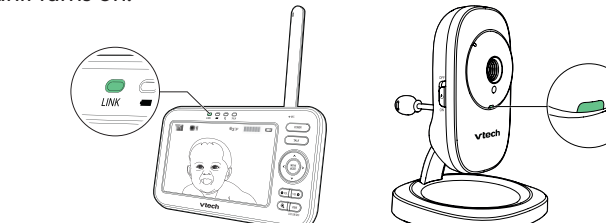
- The default volume of your parent unit is level 4, and the maximum volume is level 7. If you experience high-pitched screaming noise from your baby monitor while positioning:
  - Make sure your baby unit and parent unit are more than 3 feet (1 meter) apart, OR
  - Lower the volume of your parent unit.

**NOTE**

- To avoid interference from other electronic devices, place your baby monitor at least 3 feet (1 meter) away from devices such as wireless routers, microwaves, cell phones and computers.

## 4 STATUS CHECK

Once you power on both your baby unit and parent unit, your parent unit displays image from the baby unit, and the **LINK** LED light turns on. The **ON/OFF** LED light of baby unit turns on.

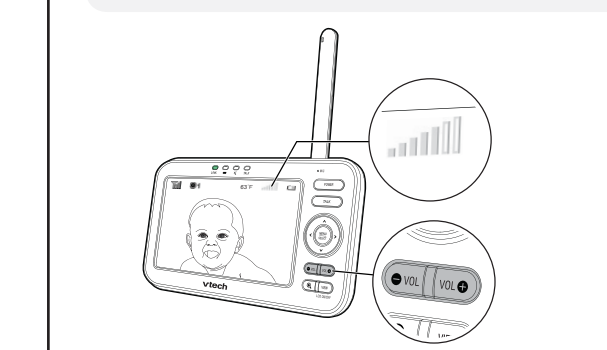


## BASIC OPERATION - PARENT UNIT

### Adjust speaker volume

Press **VOL** / **VOL** to adjust your parent unit speaker volume.

The sound sensitivity setting also affects the speaker volume. For details, refer to **Sound sensitivity and sound activation**.



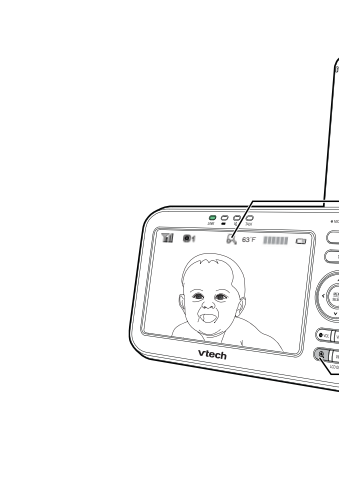
### Talk to your baby unit

Press and hold **TALK** and speak to your parent unit. Your voice is transmitted to the baby unit.



### Zoom

Press **Q** to zoom in or out.



### Turn off the screen

Press and hold **LCD ON/OFF** to switch off the screen. You can still hear sound from the baby unit.



**TIP**

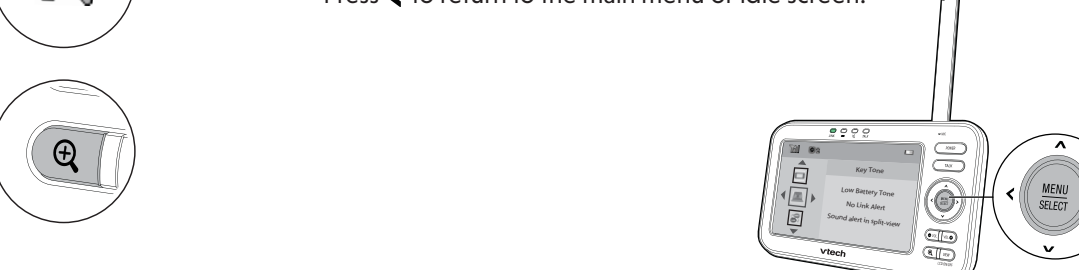
- Press any keys on the parent unit to turn on the screen again.

### Use the menu

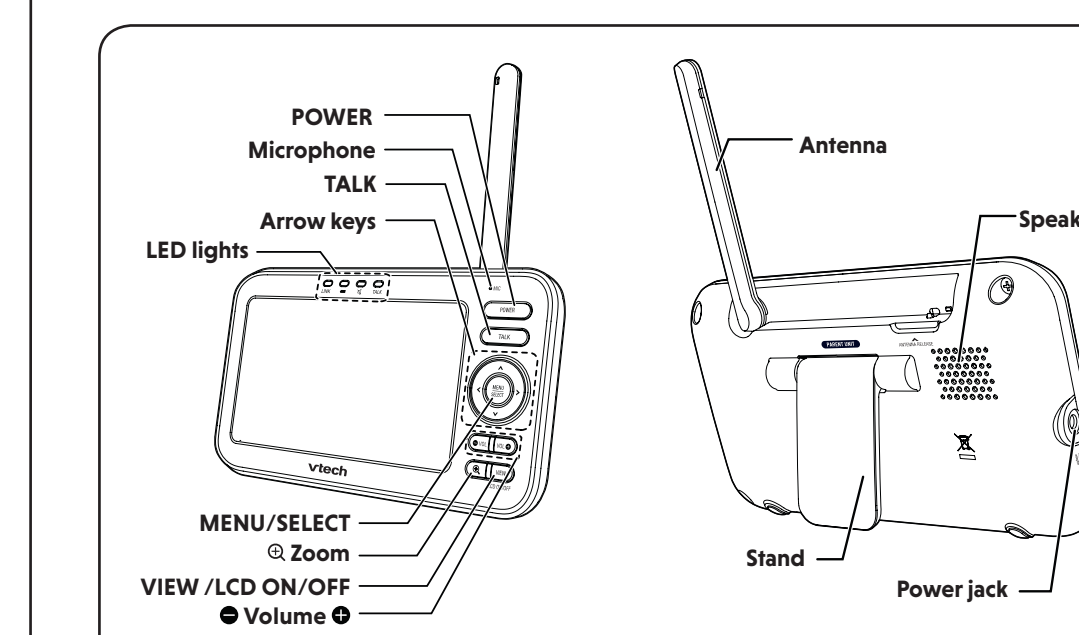
Press **MENU/SELECT** to enter the menu, choose a menu item, or save a setting. You can use the parent unit for advanced settings or operations, such as to play or stop the baby unit lullaby, or to adjust the baby unit sound sensitivity.

While in the menu:

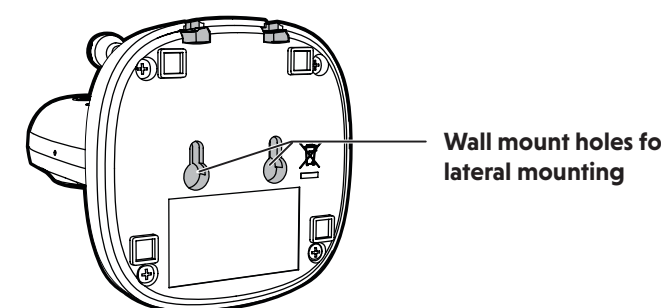
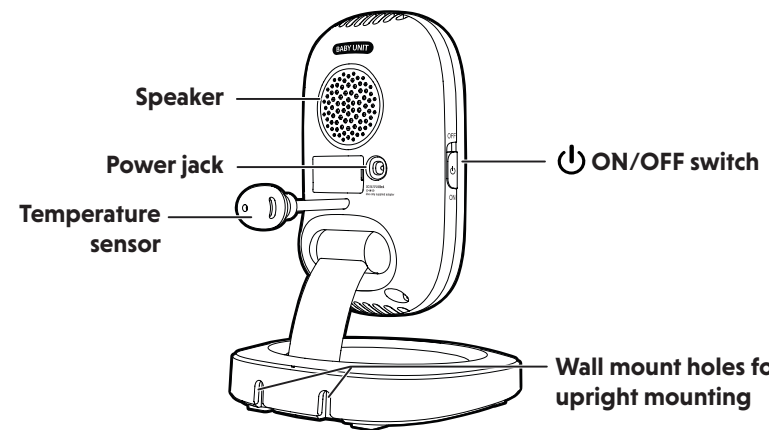
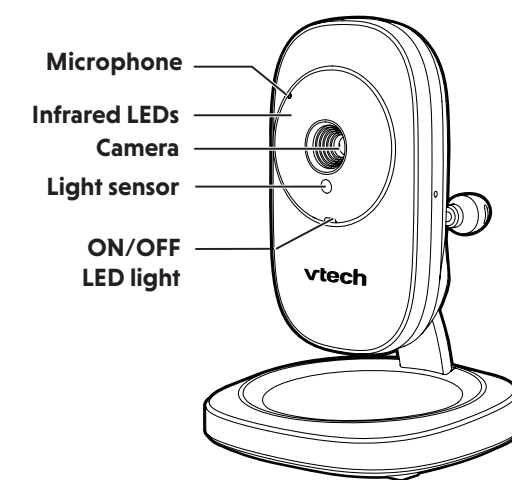
- Press **▲** or **▼** to scroll among the menu options.
- Press **MENU/SELECT** or **▶** to select an item.
- Press **◀** to return to the main menu or idle screen.



## OVERVIEW - PARENT UNIT



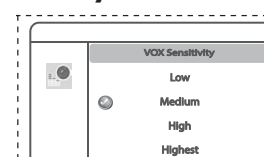
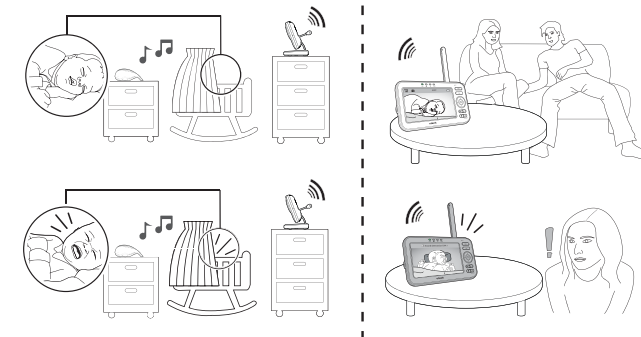
## OVERVIEW - BABY UNIT



## SOUND SENSITIVITY AND SOUND ACTIVATION

### Adjust sound detection sensitivity

With sound sensitivity setting, you can choose to hear sounds from the baby unit all the time, or to hear sounds that exceed a certain level.



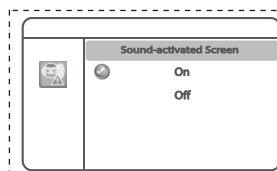
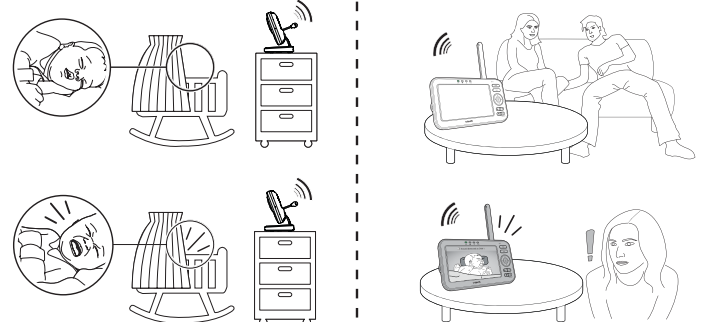
Parent unit setting	What happens...	You may experience...	What you could do...
Speaker volume: LOW [Default]	Hear all sounds all the time, including background sounds.	Difficulty in hearing your baby's soft sounds if the background sounds are louder.	<ul style="list-style-type: none"> <li>Increase parent unit's speaker volume, and lower sound sensitivity.</li> <li>If you are using a white noise machine or sound machine, set its volume to low, or relocate it to minimize background sounds.</li> </ul>
Sensitivity: Highest [Default]	Only hear sounds that exceed the selected sound sensitivity level.	No sound; or sounds that cut in and out at times as the baby unit may not detect extra soft sounds.	Increase the sound sensitivity, and adjust the volume level if necessary.
Speaker volume: MAX			
Sensitivity: Low / Medium			

For details, please see **Adjust the sound sensitivity of the baby unit** in the User's manual.

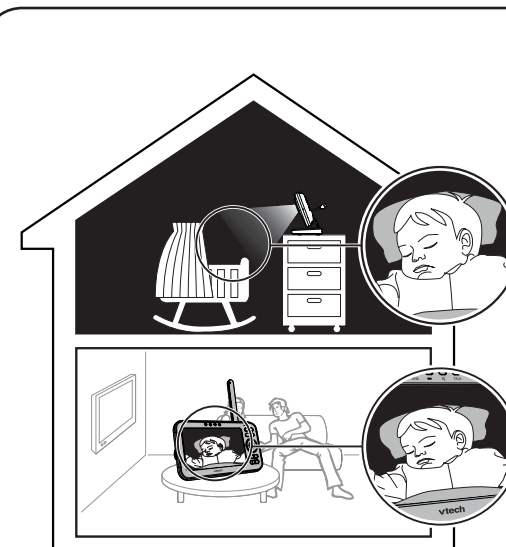
### Sound activated screen

When sound activation is on, the parent unit screen stays off to save power when the baby unit detects no sound.

Once the baby unit detects sounds that are louder than the chosen sound sensitivity level, the parent unit screen turns on automatically. It will then turn off again after 50 seconds of no sound detection.



## NIGHT VISION



The baby unit has infrared LEDs that allow you to see your baby clearly at night or in a dark room. When the baby unit being viewed detects low light levels, the infrared LEDs are switched on automatically. The images from the baby unit are in black and white, and appears on the screen.

### NOTES

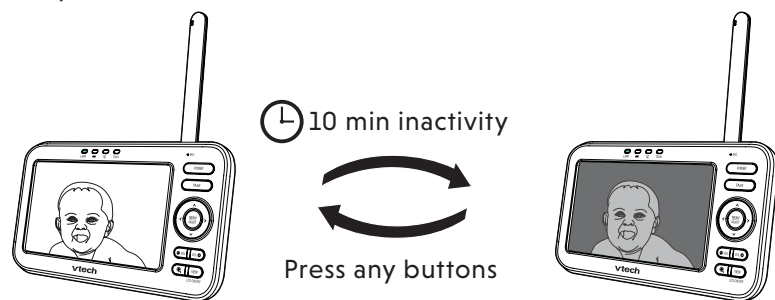
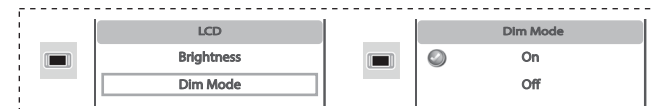
- It is normal if you see a short white glare on your parent unit screen as the baby unit is adapting to the dark environment.
- When the infrared LEDs are on, the images are in black and white. This is normal.

### TIP

- Depending on the surroundings and other interfering factors, like lightings, objects, colors and backgrounds, the video quality may vary. Adjust the baby unit's angle or place the baby unit at a higher level to prevent glare and blurry display.

## DIM MODE

With dim mode preset to on, your parent unit display will dim to conserve energy after 10 minutes of inactivity, in which there is neither key pressed nor alert received from the baby unit.



### NOTE

- If you do not want LCD to dim automatically, turn off the **Dim Mode**.

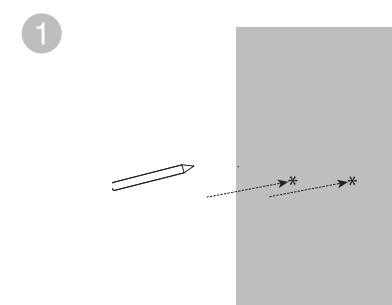
## MOUNT THE BABY UNIT ON DRY WALL (OPTIONAL)

### Items to purchase

- 2 screws
- 2 anchors

### NOTE

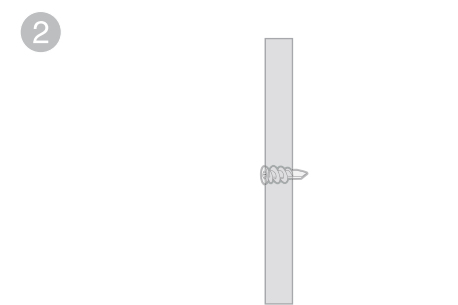
- The types of screws and anchors you need depend on the composition of the wall.



### NOTE

- Check for reception strength and camera angle before drilling the holes.

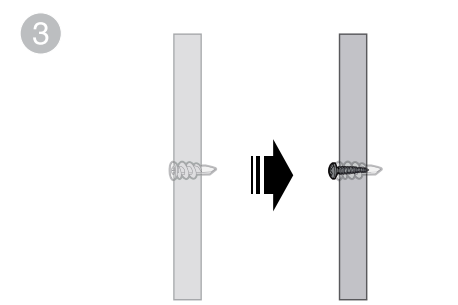
Use a pencil to mark two holes in parallel. Make sure they are the same distance apart as the wall mount holes on the baby unit.



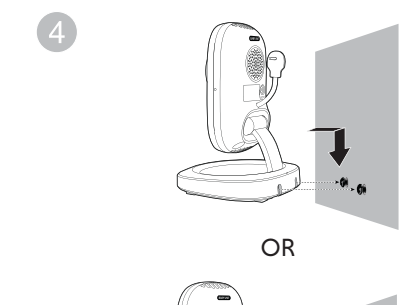
Drill two holes in the wall. If you drill the holes into a stud, go to step 3.

### -OR-

If you drill the holes into an object other than a stud, insert the wall anchors into the holes. Tap gently on the ends with a hammer until the wall anchors are flush with the wall.

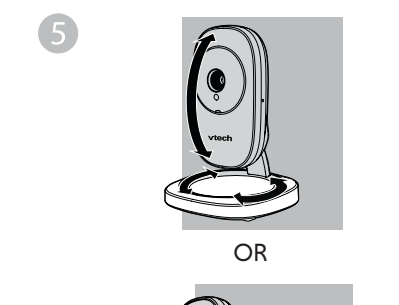
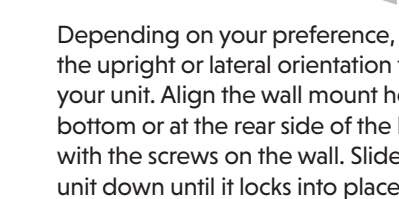


Insert the screws into the holes and tighten the screws until only 1/4 inch of the screws are exposed.



Depending on your preference, choose the upright or lateral orientation to mount your unit. Align the wall mount holes at the bottom or at the rear side of the baby unit with the screws on the wall. Slide the baby unit down until it locks into place.

OR

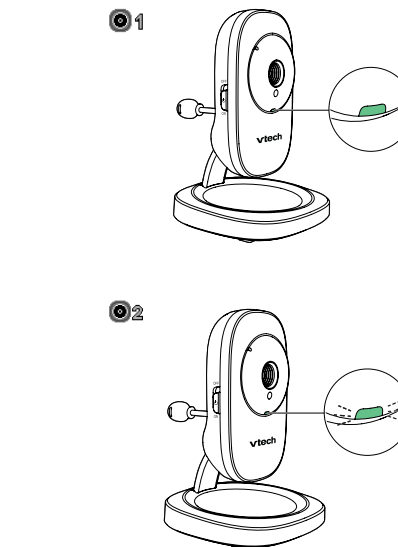


Tilt or rotate to adjust camera angle.

## FOR VM5251-2 ONLY

### Status check - Two baby units

If you are viewing baby unit 1, the **POWER** LED light of baby unit 1 turns on. As baby unit 2 is not being viewed, its **POWER** LED light flashes.

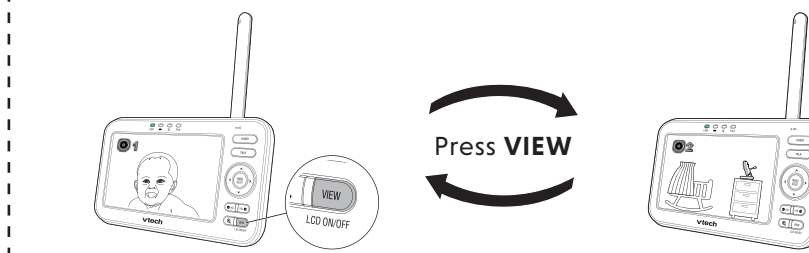


### NOTE

- If you power on only one baby unit, you may see the parent unit displaying **LINK** and then **No link to CAM #** (# represents the baby unit number), and the **LINK** LED light flashing. Press **VIEW** in **Single CAM** or **Patrol** mode to switch to the baby unit you have powered on.

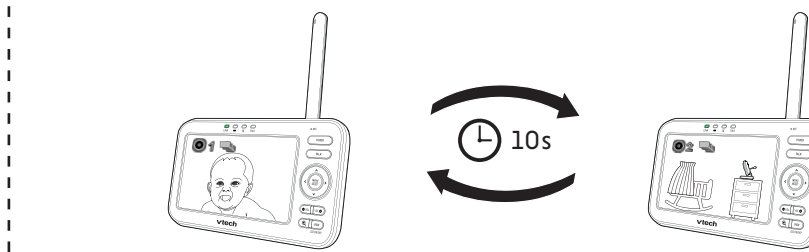
### Change different views - Single CAM

In **Single CAM** or **Patrol** mode, press **VIEW** to switch between the image of baby units 1 and 2.



### Change different views - Patrol

Select **Patrol** as your monitoring mode to alternately view the image from baby units 1 and 2 every 10 seconds.



### Change different views - Split

Select **Split** as your monitoring mode to view the images from both baby units at once.

